

SHERMAN OAKS OFFICE SPACE

15300 Ventura Blvd, Sherman Oaks



FEATURES

- Across from the Sherman Oaks Galleria
- HVAC available until 9:30 pm
- Fiber in building
- Immediate access to 101 & 405 Fwys
- Strong ownership and management
- After hours lobby guard
- Low load factor
- Monument Signage Available

AVAILABLE

Suite	Size	Rate	Type
101	6,117 SF	\$3.00 PSF	MG
303	2,095 SF	\$3.10 PSF	FSG
304	3,719 SF	\$3.10 PSF	FSG
328	773 SF	\$3.10 PSF	FSG
500	2,508 SF	\$3.10 PSF	FSG
507	1,864 SF	\$3.10 PSF	FSG

PARKING (per stall)

\$110	Roof
\$175	Reserved Single
\$260	Tandem (2 cars)

For more information please contact:

Scott Romick
Principal
818.933.0305
sromick@lee-re.com
BRE# 01323527



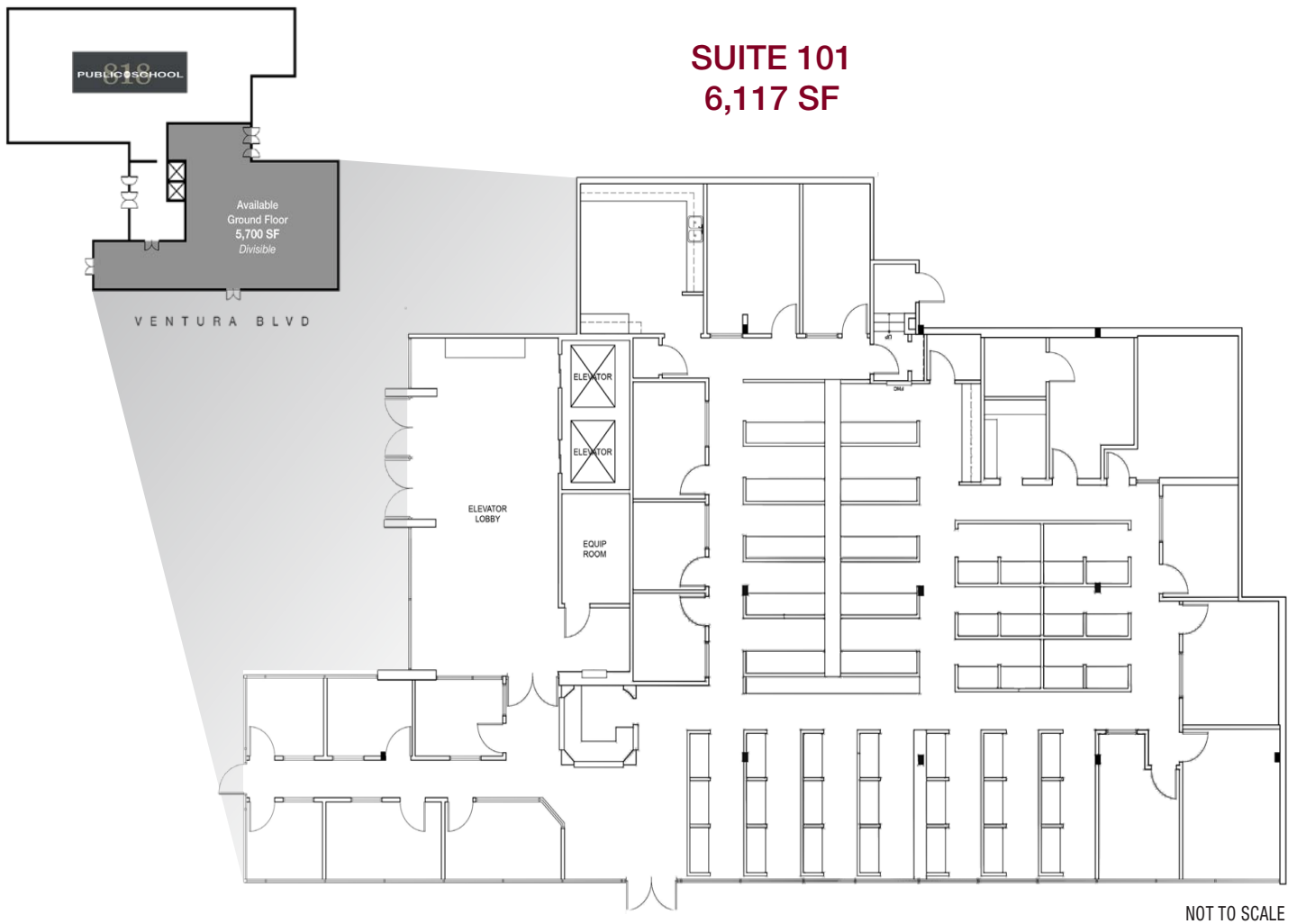
Lee & Associates® - LA North/Ventura, Inc. • Corporate ID #01191898
A Member of the Lee & Associates® Group of Companies
15250 Ventura Blvd., Suite 100 • Sherman Oaks, CA 91403
P:818.986.9800 F:818.933.0405 • www.lee-associates.com

Professionally managed by:



No warranty or representation is made to the accuracy of the foregoing information. Terms of sale or lease and availability are subject to change or withdrawal without notice.

15300 Ventura Blvd, Sherman Oaks



For more information please contact:

Scott Romick
Principal
818.933.0305
sromick@lee-re.com
BRE# 01323527



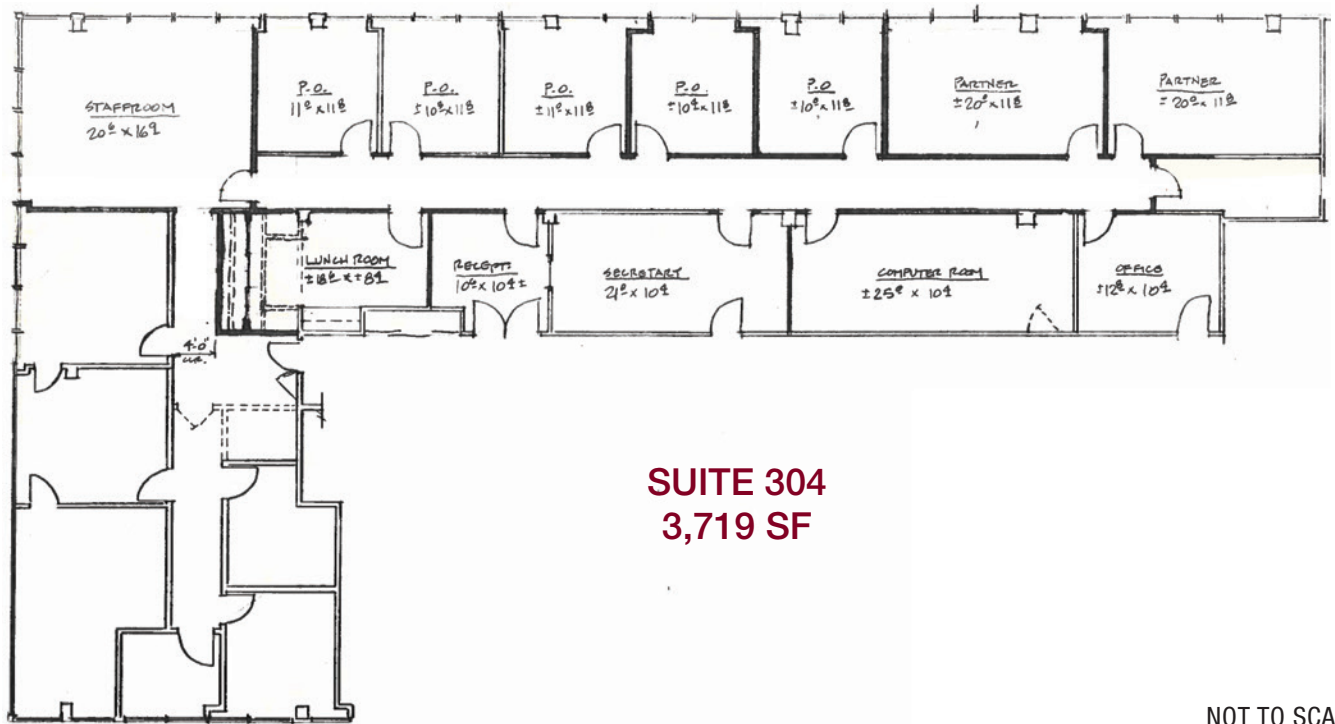
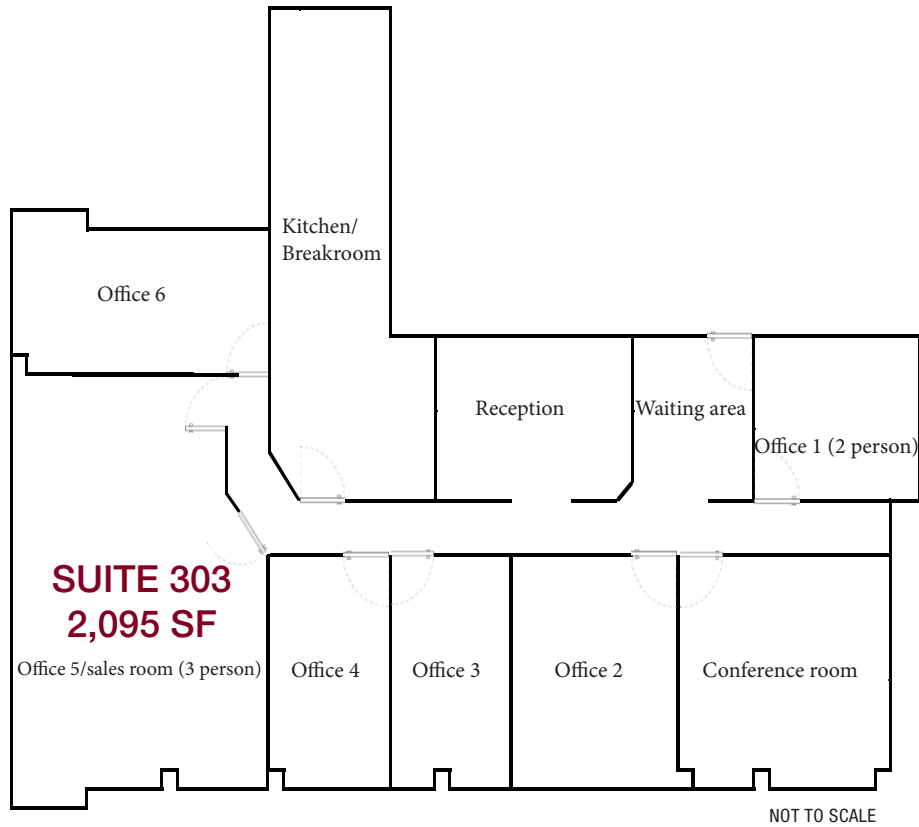
Lee & Associates® - LA North/Ventura, Inc. • Corporate ID #01191898
A Member of the Lee & Associates® Group of Companies
15250 Ventura Blvd., Suite 100 • Sherman Oaks, CA 91403
P:818.986.9800 F:818.933.0405 • www.lee-associates.com

Professionally managed by:



No warranty or representation is made to the accuracy of the foregoing information. Terms of sale or lease and availability are subject to change or withdrawal without notice.

15300 Ventura Blvd, Sherman Oaks



For more information please contact:

Scott Romick
Principal
818.933.0305
sromick@lee-re.com
BRE# 01323527



Lee & Associates® - LA North/Ventura, Inc. • Corporate ID #01191898
A Member of the Lee & Associates® Group of Companies
15250 Ventura Blvd., Suite 100 • Sherman Oaks, CA 91403
P:818.986.9800 F:818.933.0405 • www.lee-associates.com

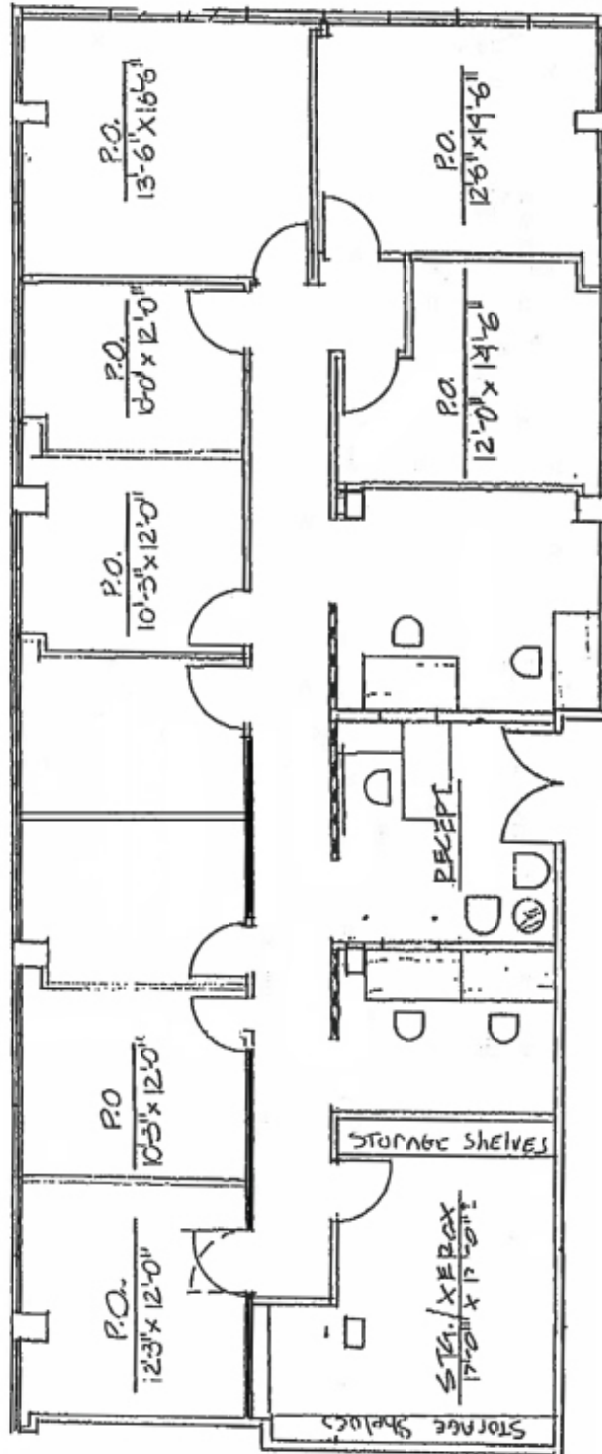
Professionally managed by:



No warranty or representation is made to the accuracy of the foregoing information. Terms of sale or lease and availability are subject to change or withdrawal without notice.

15300 Ventura Blvd, Sherman Oaks

SUITE 500
2,508 SF



NOT TO SCALE

For more information please contact:

Scott Romick
Principal
818.933.0305
sromick@lee-re.com
BRE# 01323527



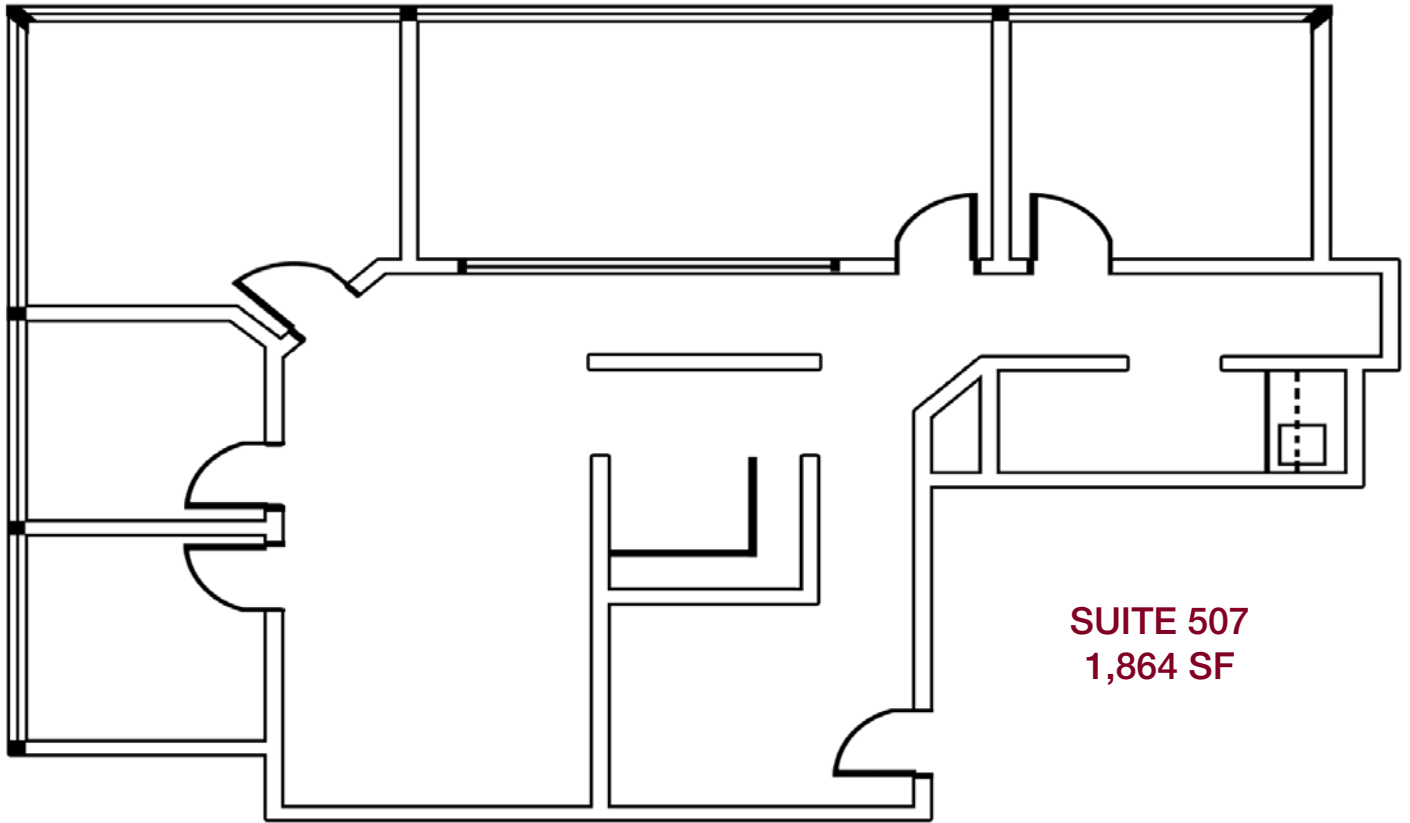
Lee & Associates® - LA North/Ventura, Inc. • Corporate ID #01191898
A Member of the Lee & Associates® Group of Companies
15250 Ventura Blvd., Suite 100 • Sherman Oaks, CA 91403
P:818.986.9800 F:818.933.0405 • www.lee-associates.com

Professionally managed by:



No warranty or representation is made to the accuracy of the foregoing information. Terms of sale or lease and availability are subject to change or withdrawal without notice.

15300 Ventura Blvd, Sherman Oaks



SUITE 507
1,864 SF

NOT TO SCALE

For more information please contact:

Scott Romick
Principal
818.933.0305
sromick@lee-re.com
BRE# 01323527



Lee & Associates® - LA North/Ventura, Inc. • Corporate ID #01191898
A Member of the Lee & Associates® Group of Companies
15250 Ventura Blvd., Suite 100 • Sherman Oaks, CA 91403
P:818.986.9800 F:818.933.0405 • www.lee-associates.com

Professionally managed by:



No warranty or representation is made to the accuracy of the foregoing information. Terms of sale or lease and availability are subject to change or withdrawal without notice.