

OFFICE SUITES FOR LEASE

SHERMAN OAKS ATRIUM

15315 Magnolia Blvd, Sherman Oaks



FEATURES

- Beautiful Landscaped Atrium
- Outdoor Patio
- Subterranean Parking With Attendant
- Excellent Street Parking
- Flexible After-Hours HVAC
- Easy Access to 405 & 101 Freeways
- Spectrum Cable
- AT&T Business

PARKING (per stall)

\$180 per month Tandem Reserved (\$90 per car)
\$130 per month Single Reserved
2/1,000 SF

LEASE RATE

\$2.35 PSF FSG

AVAILABLE

SUITE	SIZE	COMMENTS
225	3,635 RSF	
226	2,501 RSF	4 Offices, Windowed Open Area, Sink
302	2,296 RSF	
320	3,018 RSF	
225/226	5,136 RSF	
225/226/320	9,154 RSF	

For more information please contact:

Darren Casamassima
Principal
818.933.0303
dc@lee-re.com
BRE# 01425638

Scott Romick
Principal
818.933.0305
sromick@lee-re.com
BRE# 01323527

LEE & ASSOCIATES
COMMERCIAL REAL ESTATE SERVICES

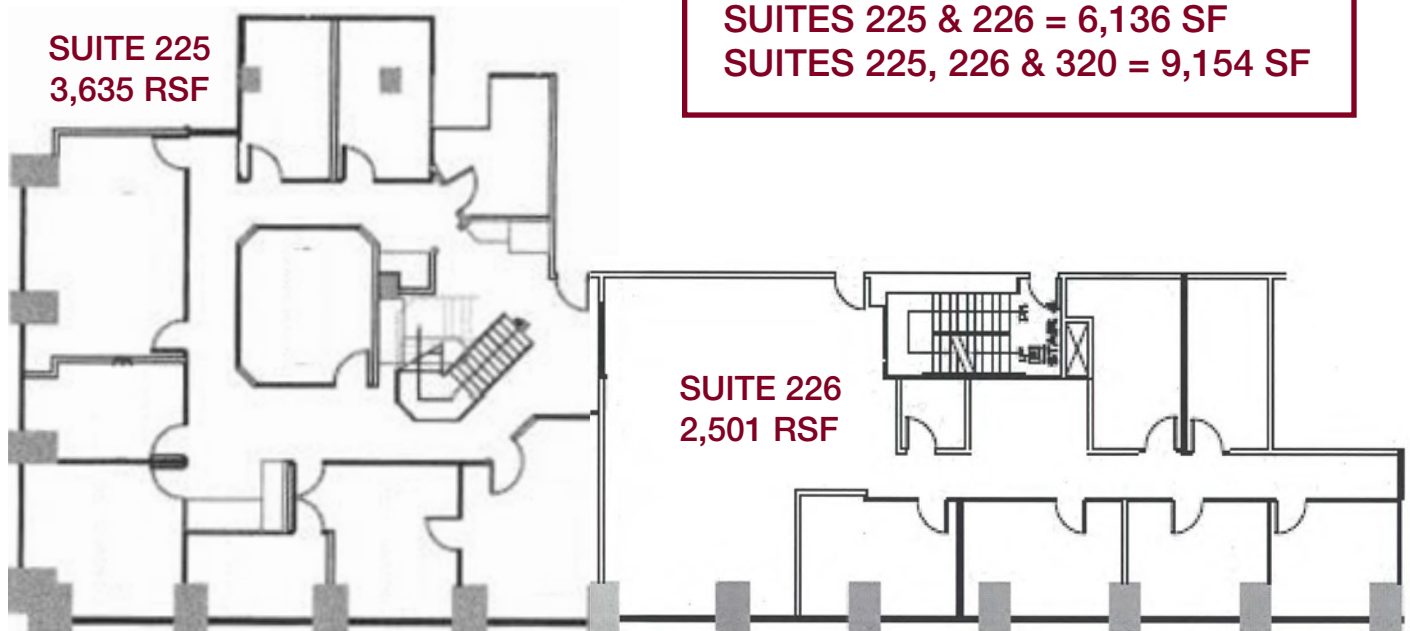
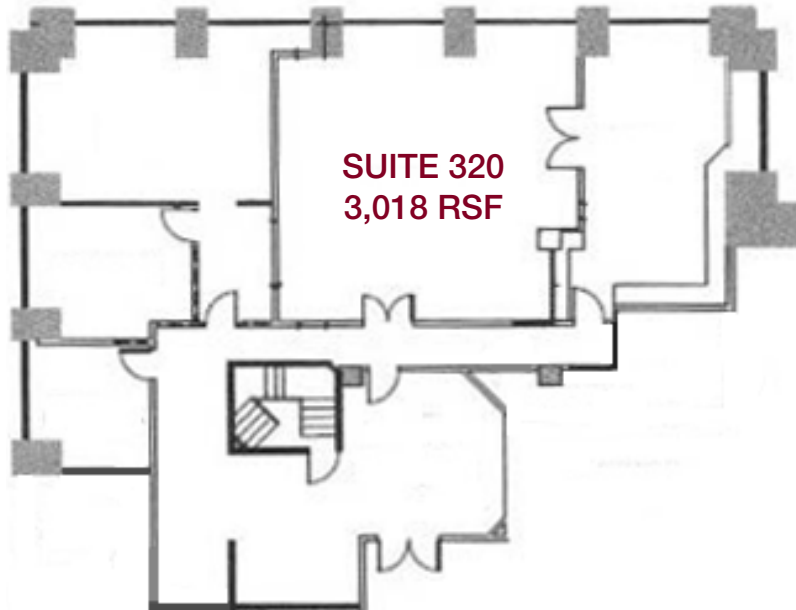
Lee & Associates® - LA North/Ventura, Inc. • Corporate ID #01191898
A Member of the Lee & Associates® Group of Companies
15250 Ventura Blvd., Suite 100 • Sherman Oaks, CA 91403
P:818.986.9800 F:818.933.0405 • www.lee-associates.com

No warranty or representation is made to the accuracy of the foregoing information. Terms of sale or lease and availability are subject to change or withdrawal without notice.

OFFICE SUITES FOR LEASE

Sherman Oaks Atrium

15315 Magnolia Blvd, Sherman Oaks



SUITES 225 & 226 = 6,136 SF
SUITES 225, 226 & 320 = 9,154 SF

NOT TO SCALE

For more information please contact:

Darren Casamassima
Principal
818.933.0303
dc@lee-re.com
BRE# 01425638

Scott Romick
Principal
818.933.0305
sromick@lee-re.com
BRE# 01323527



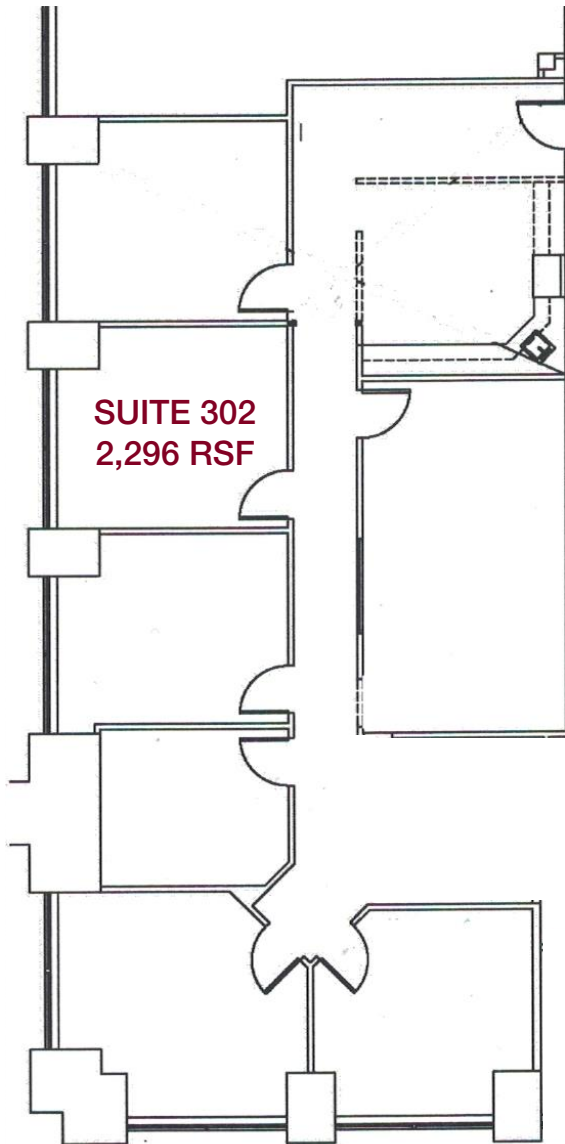
Lee & Associates® - LA North/Ventura, Inc. • Corporate ID #01191898
A Member of the Lee & Associates® Group of Companies
15250 Ventura Blvd., Suite 100 • Sherman Oaks, CA 91403
P:818.986.9800 F:818.933.0405 • www.lee-associates.com

No warranty or representation is made to the accuracy of the foregoing information. Terms of sale or lease and availability are subject to change or withdrawal without notice.

OFFICE SUITES FOR LEASE

Sherman Oaks Atrium

15315 Magnolia Blvd, Sherman Oaks



NOT TO SCALE

For more information please contact:

Darren Casamassima
Principal
818.933.0303
dc@lee-re.com
BRE# 01425638

Scott Romick
Principal
818.933.0305
sromick@lee-re.com
BRE# 01323527



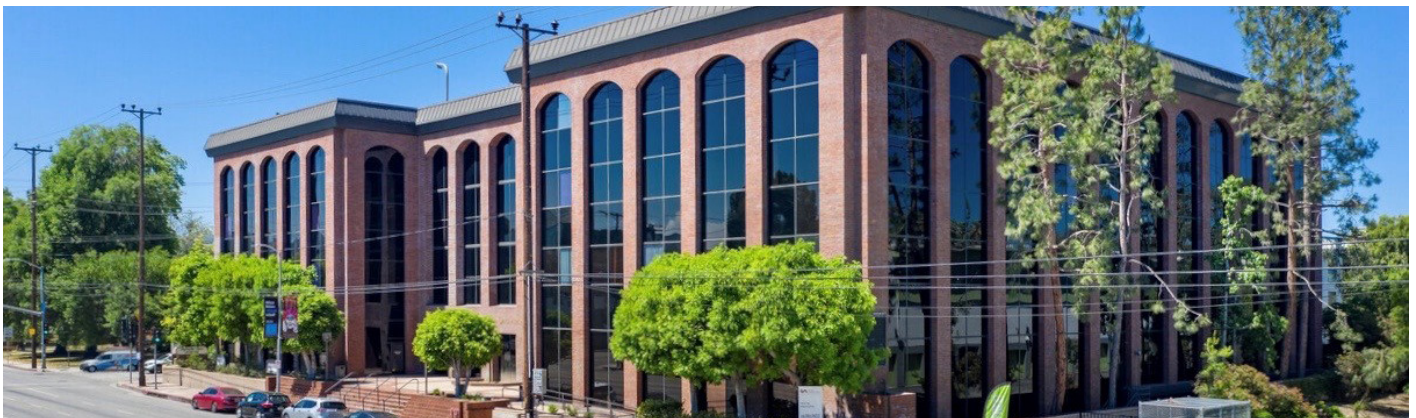
Lee & Associates® - LA North/Ventura, Inc. • Corporate ID #01191898
A Member of the Lee & Associates® Group of Companies
15250 Ventura Blvd., Suite 100 • Sherman Oaks, CA 91403
P:818.986.9800 F:818.933.0405 • www.lee-associates.com

No warranty or representation is made to the accuracy of the foregoing information. Terms of sale or lease and availability are subject to change or withdrawal without notice.

OFFICE SUITES FOR LEASE

Sherman Oaks Atrium

15315 Magnolia Blvd, Sherman Oaks



For more information please contact:

Darren Casamassima
Principal
818.933.0303
dc@lee-re.com
BRE# 01425638

Scott Romick
Principal
818.933.0305
sromick@lee-re.com
BRE# 01323527

LEE & ASSOCIATES
COMMERCIAL REAL ESTATE SERVICES

Lee & Associates® - LA North/Ventura, Inc. • Corporate ID #01191898
A Member of the Lee & Associates® Group of Companies
15250 Ventura Blvd., Suite 100 • Sherman Oaks, CA 91403
P:818.986.9800 F:818.933.0405 • www.lee-associates.com

No warranty or representation is made to the accuracy of the foregoing information. Terms of sale or lease and availability are subject to change or withdrawal without notice.