

Encino Executive Center

OFFICE SUITES FOR LEASE

16027 Ventura Blvd, Encino



FEATURES

- AT&T Business Fiber Available
- Will Build to Suit for Tenant
- Many Suites Can Be Divided or Combined
- Can Accommodate All Sizes
- Adjacent to Numerous Amenities
- Direct Elevator Access to Secured Parking

AVAILABLE

Suite	Size	Suite	Size
101*	4,182 SF	604	1,670 SF
210	3,890 SF	605**	1,921 SF
320	2,384 SF	608***	2,438 SF
330	2,096 SF	620***	519 SF
501	3,863 SF	660	1,738 RSF
550	3,491 SF		
601**	1,714 SF		

PARKING

Single Reserved	\$190.00 per month
Single Unreserved	\$125.00 per month
Tandem Reserved	\$105.00 per month

*Suite 101 is Office/Retail With Ventura Frontage

**Suites 601 & 605 combine for 3,635 SF

***Suites 608 & 620 combine for 2,957 SF

Pricing: \$2.60 PSF/FSG

Suite 101 \$2.80 PSF/FSG

For more information please contact:

Scott Romick
818.933.0305
sromick@lee-re.com
DRE# 01323527

Darren Casamassima
818.933.0303
dc@lee-re.com
DRE# 01425638

David Kaufman
818.933.0311
dkaufman@lee-re.com
DRE# 02109841

LEE & ASSOCIATES
COMMERCIAL REAL ESTATE SERVICES

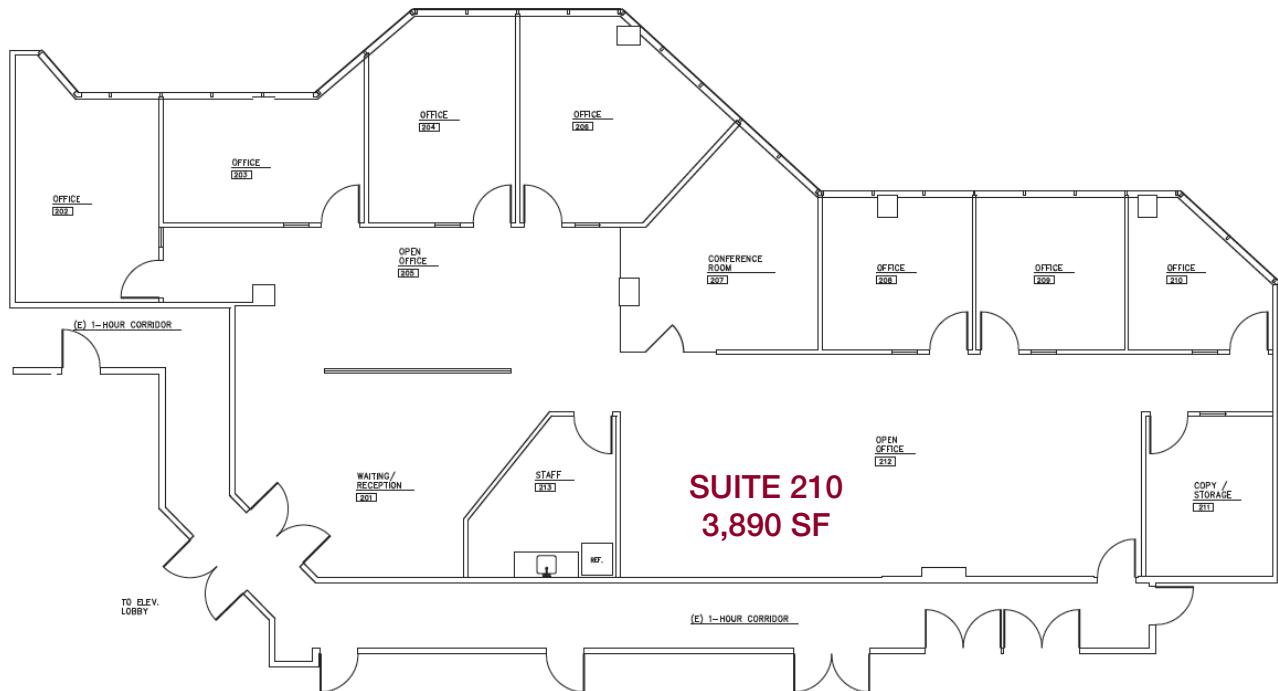
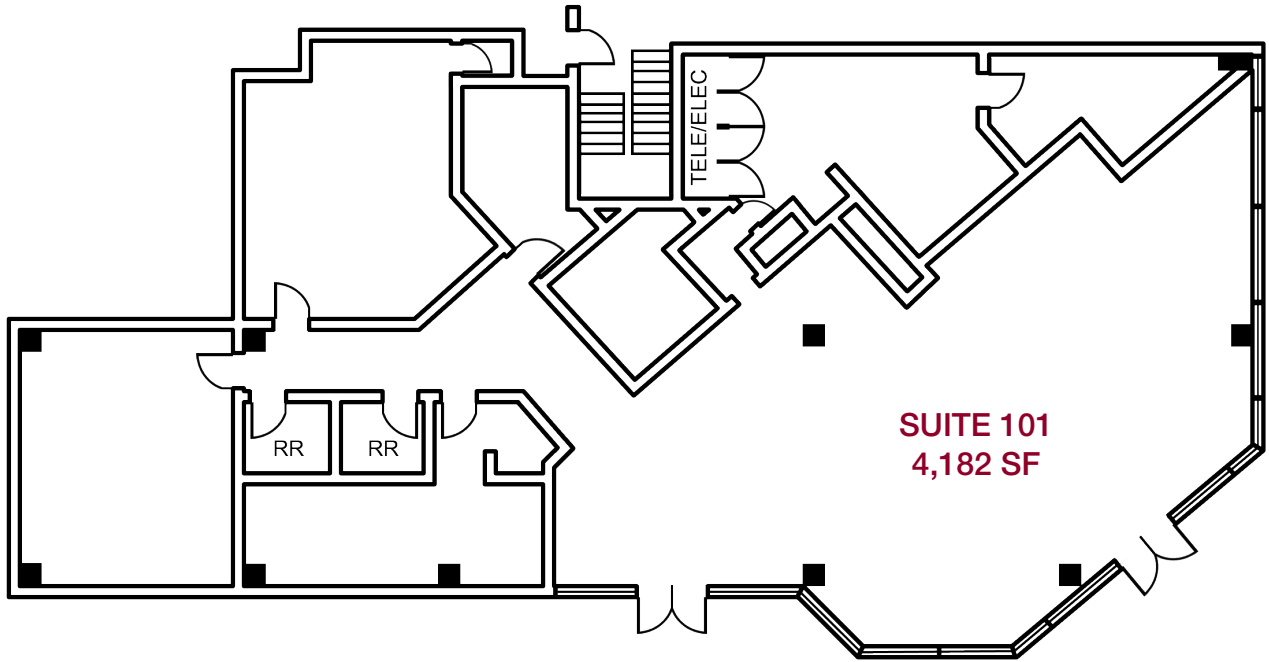
Lee & Associates® - LA North/Ventura, Inc. • Corporate ID #01191898
A Member of the Lee & Associates® Group of Companies
15250 Ventura Blvd., Suite 100 • Sherman Oaks, CA 91403
P:818.986.9800 F:818.933.0405 • www.lee-associates.com

No warranty or representation is made to the accuracy of the foregoing information. Terms of sale or lease and availability are subject to change or withdrawal without notice.

Encino Executive Center

OFFICE SUITES FOR LEASE

16027 Ventura Blvd, Encino



NOT TO SCALE

For more information please contact:

Scott Romick
818.933.0305
sromick@lee-re.com
DRE# 01323527

Darren Casamassima
818.933.0303
dc@lee-re.com
DRE# 01425638

David Kaufman
818.933.0311
dkaufman@lee-re.com
DRE# 02109841



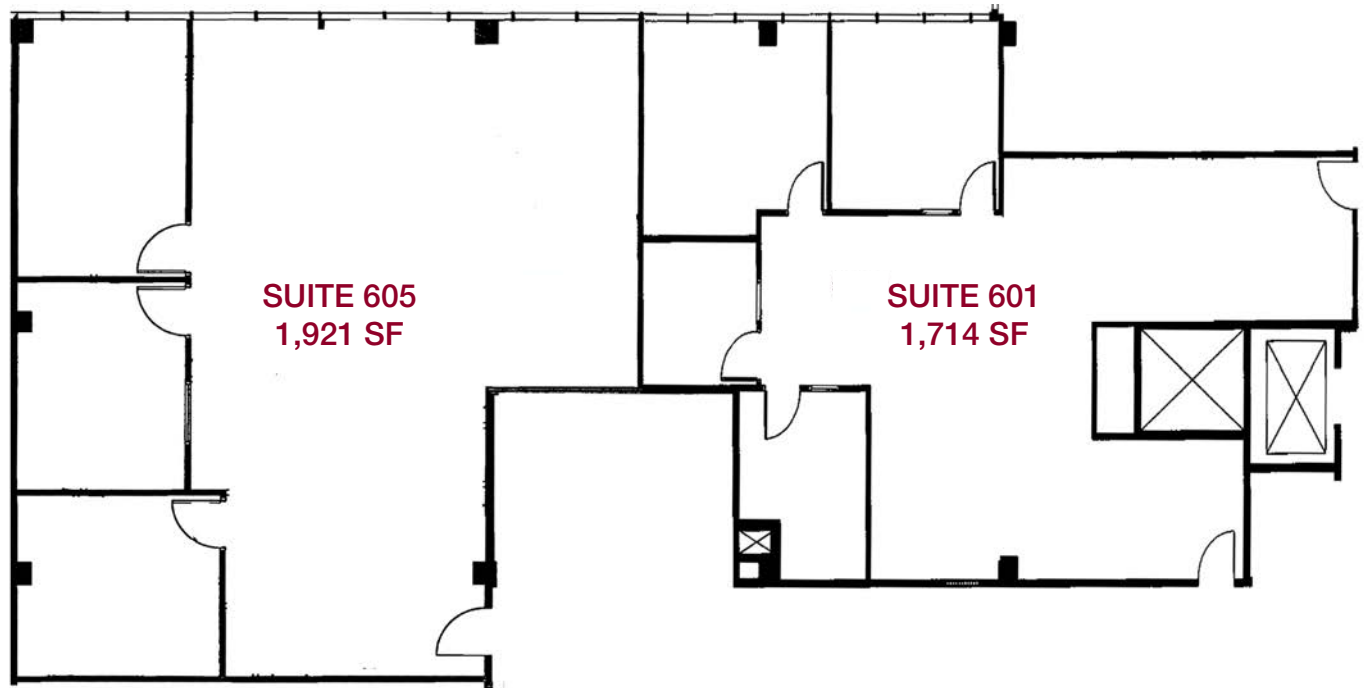
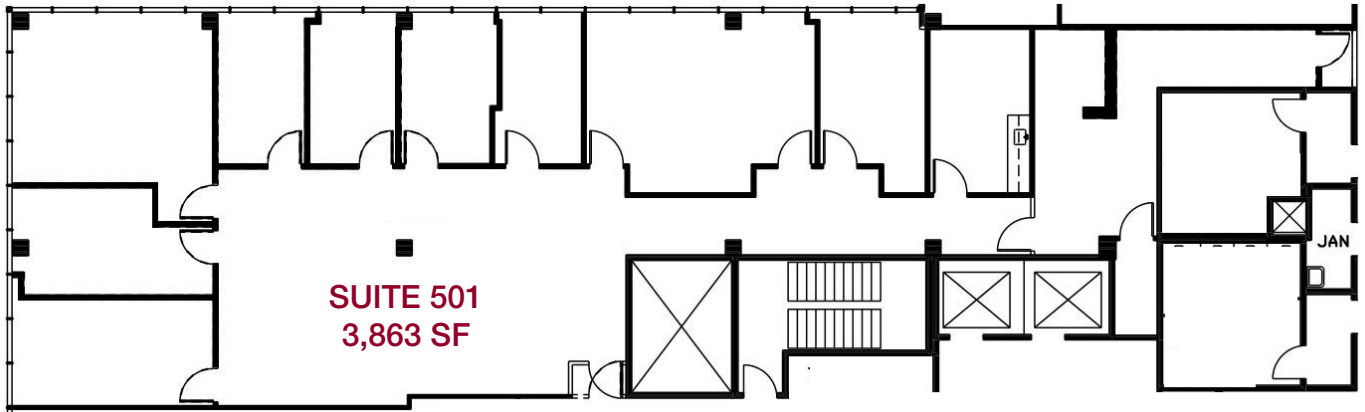
Lee & Associates® - LA North/Ventura, Inc. • Corporate ID #01191898
A Member of the Lee & Associates® Group of Companies
15250 Ventura Blvd., Suite 100 • Sherman Oaks, CA 91403
P:818.986.9800 F:818.933.0405 • www.lee-associates.com

No warranty or representation is made to the accuracy of the foregoing information. Terms of sale or lease and availability are subject to change or withdrawal without notice.

Encino Executive Center

OFFICE SUITES FOR LEASE

16027 Ventura Blvd, Encino



NOT TO SCALE

For more information please contact:

Scott Romick
818.933.0305
sromick@lee-re.com
DRE# 01323527

Darren Casamassima
818.933.0303
dc@lee-re.com
DRE# 01425638

David Kaufman
818.933.0311
dkaufman@lee-re.com
DRE# 02109841



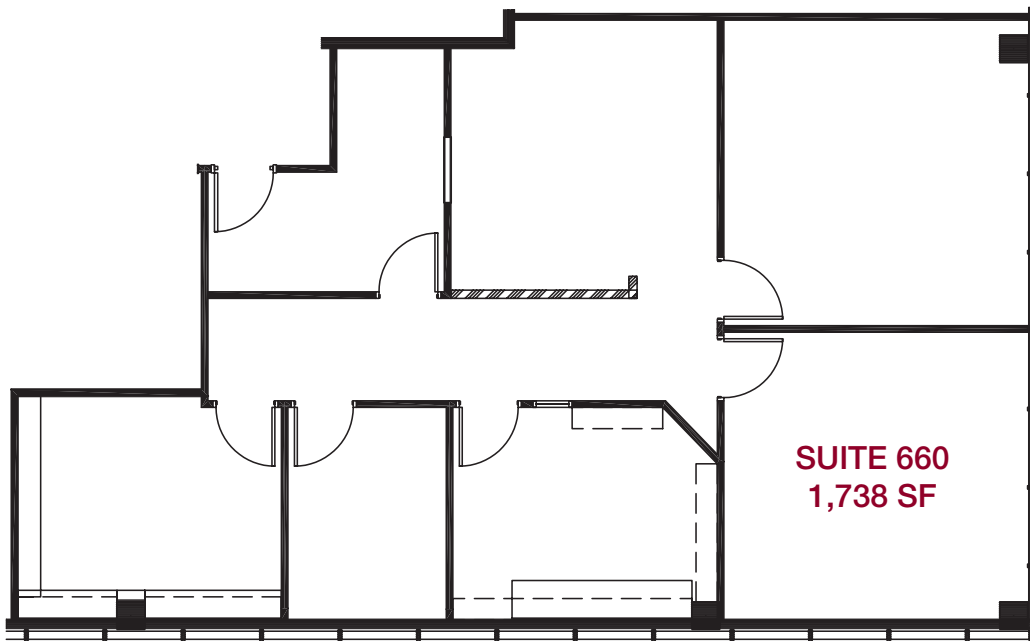
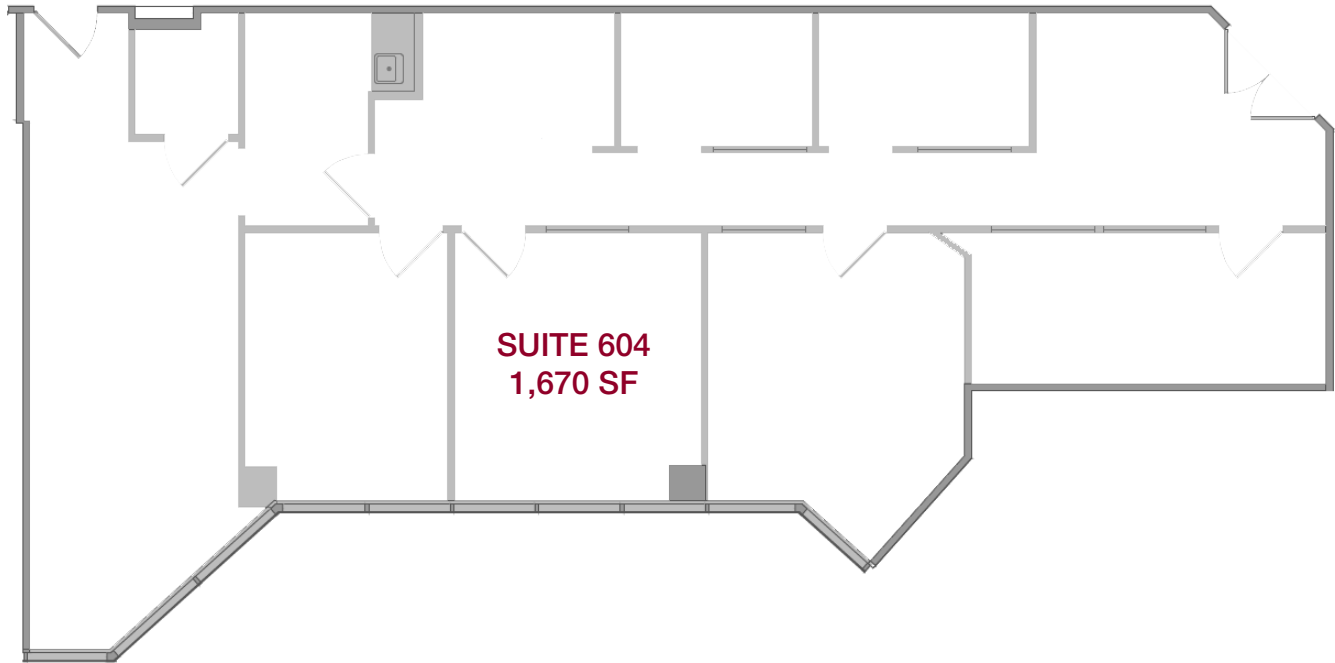
Lee & Associates® - LA North Ventura, Inc. • Corporate ID #01191898
A Member of the Lee & Associates® Group of Companies
15250 Ventura Blvd., Suite 100 • Sherman Oaks, CA 91403
P:818.986.9800 F:818.933.0405 • www.lee-associates.com

No warranty or representation is made to the accuracy of the foregoing information. Terms of sale or lease and availability are subject to change or withdrawal without notice.

Encino Executive Center

OFFICE SUITES FOR LEASE

16027 Ventura Blvd, Encino



For more information please contact:

Scott Romick
818.933.0305
sromick@lee-re.com
DRE# 01323527

Darren Casamassima
818.933.0303
dc@lee-re.com
DRE# 01425638

David Kaufman
818.933.0311
dkaufman@lee-re.com
DRE# 02109841



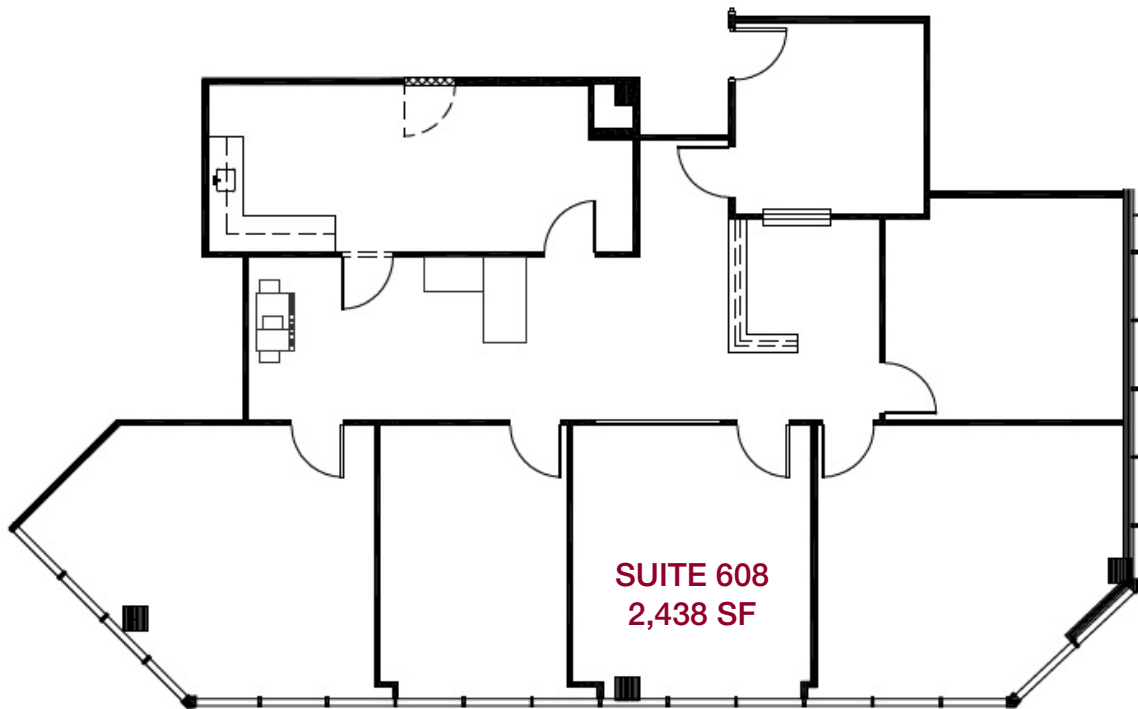
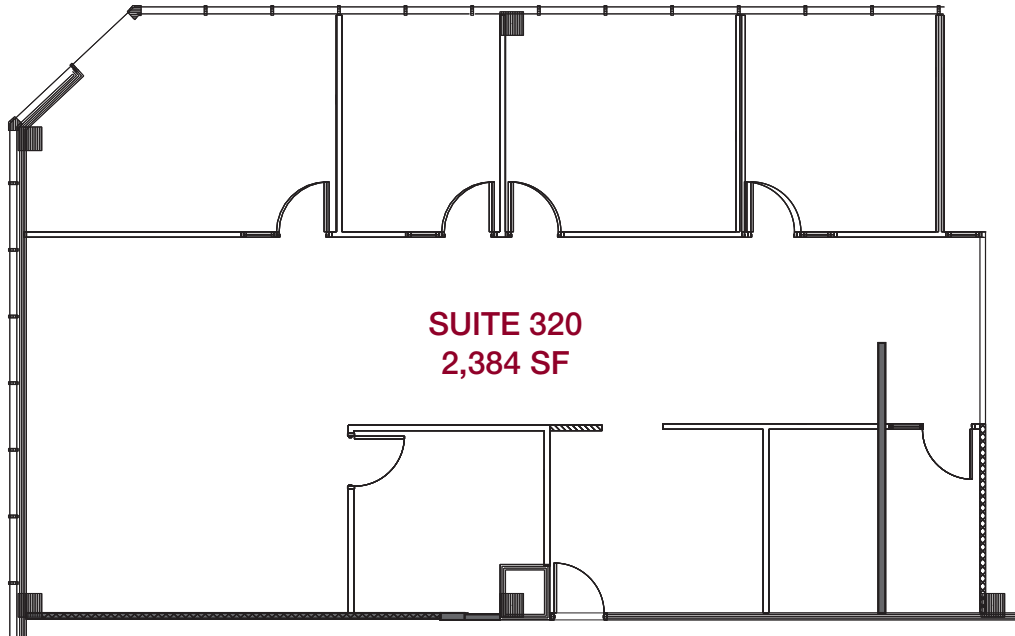
Lee & Associates® - LA NorthVentura, Inc. • Corporate ID #01191898
A Member of the Lee & Associates® Group of Companies
15250 Ventura Blvd., Suite 100 • Sherman Oaks, CA 91403
P:818.986.9800 F:818.933.0405 • www.lee-associates.com

No warranty or representation is made to the accuracy of the foregoing information. Terms of sale or lease and availability are subject to change or withdrawal without notice.

Encino Executive Center

OFFICE SUITES FOR LEASE

16027 Ventura Blvd, Encino



...NOT TO SCALE

For more information please contact:

Scott Romick

818.933.0305

sromick@lee-re.com

DRE# 01323527

Darren Casamassima

818.933.0303

dc@lee-re.com

DRE# 01425638

David Kaufman

818.933.0311

dkaufman@lee-re.com

DRE# 02109841



Lee & Associates® - LA NorthVentura, Inc. • Corporate ID #01191898

A Member of the Lee & Associates® Group of Companies

15250 Ventura Blvd., Suite 100 • Sherman Oaks, CA 91403

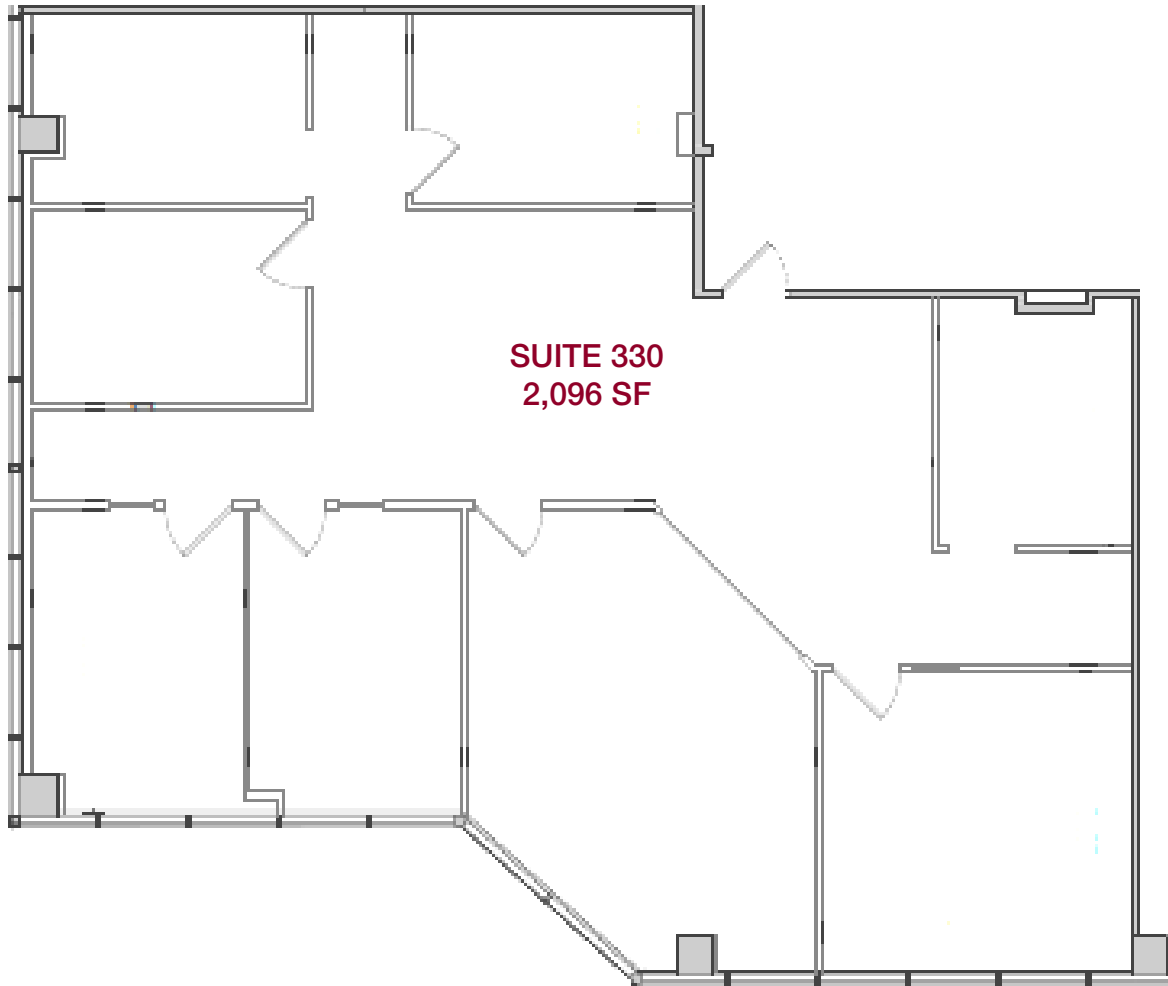
P:818.986.9800 F:818.933.0405 • www.lee-associates.com

No warranty or representation is made to the accuracy of the foregoing information. Terms of sale or lease and availability are subject to change or withdrawal without notice.

Encino Executive Center

OFFICE SUITES FOR LEASE

16027 Ventura Blvd, Encino



NOT TO SCALE

For more information please contact:

Scott Romick

818.933.0305

sromick@lee-re.com

DRE# 01323527

Darren Casamassima

818.933.0303

dc@lee-re.com

DRE# 01425638

David Kaufman

818.933.0311

dkaufman@lee-re.com

DRE# 02109841



Lee & Associates® - LA North Ventura, Inc. • Corporate ID #01191898
A Member of the Lee & Associates® Group of Companies
15250 Ventura Blvd., Suite 100 • Sherman Oaks, CA 91403
P:818.986.9800 F:818.933.0405 • www.lee-associates.com

No warranty or representation is made to the accuracy of the foregoing information. Terms of sale or lease and availability are subject to change or withdrawal without notice.