

# 21900 BURBANK BLVD

CLASS A OFFICE IN WARNER CENTER | FOR LEASE



**Scott Romick**  
818.933.0305  
sromick@lee-re.com  
Lic. 01323527

**Eugene Kim**  
818.444.4919  
ekim@lee-re.com  
Lic. 01521416

**Sydney Fraser**  
818.288.4085  
sfraser@lee-re.com  
Lic. 02149511



YOUNAN COMPANY



# 21900 BURBANK BLVD

CLASS A OFFICE IN WARNER CENTER | FOR LEASE

## AVAILABILITY SUMMARY

SUITE	SIZE
114	2,709 RSF
200	6,808 RSF
207	1,288 RSF
215	2,231 RSF
265	2,577 RSF
275	3,260 RSF
280	1,421 RSF
300	32,697 RSF (Full Floor)

\* Suite 275 & 280 contiguous for 4,681 RSF

\*\*Suite 200,215,265 contiguous for 11,616 RSF

## PROPERTY DETAILS

Asking Rate: \$2.30, Full Service Gross

Lease Term: Flexible

Parking: 3:1,000 Subterranean and Surface Level

\$80 Tandem

\$90 Unreserved

\$150 Reserved



Beautifully Designed  
Three Story  
Class "A" Property



Impressive  
Granite Accented Lobby  
& Outdoor Courtyard



Professional On-Site  
Ownership  
& Management



Private  
Members Only  
Lounge



Secured  
Underground  
Parking



Centrally located in  
Warner Center  
walking distance to  
Dining and Retail

# 21900 BURBANK BLVD

CLASS A OFFICE IN WARNER CENTER | FOR LEASE

## SUITE 114

±2,709 RSF

Reception Area

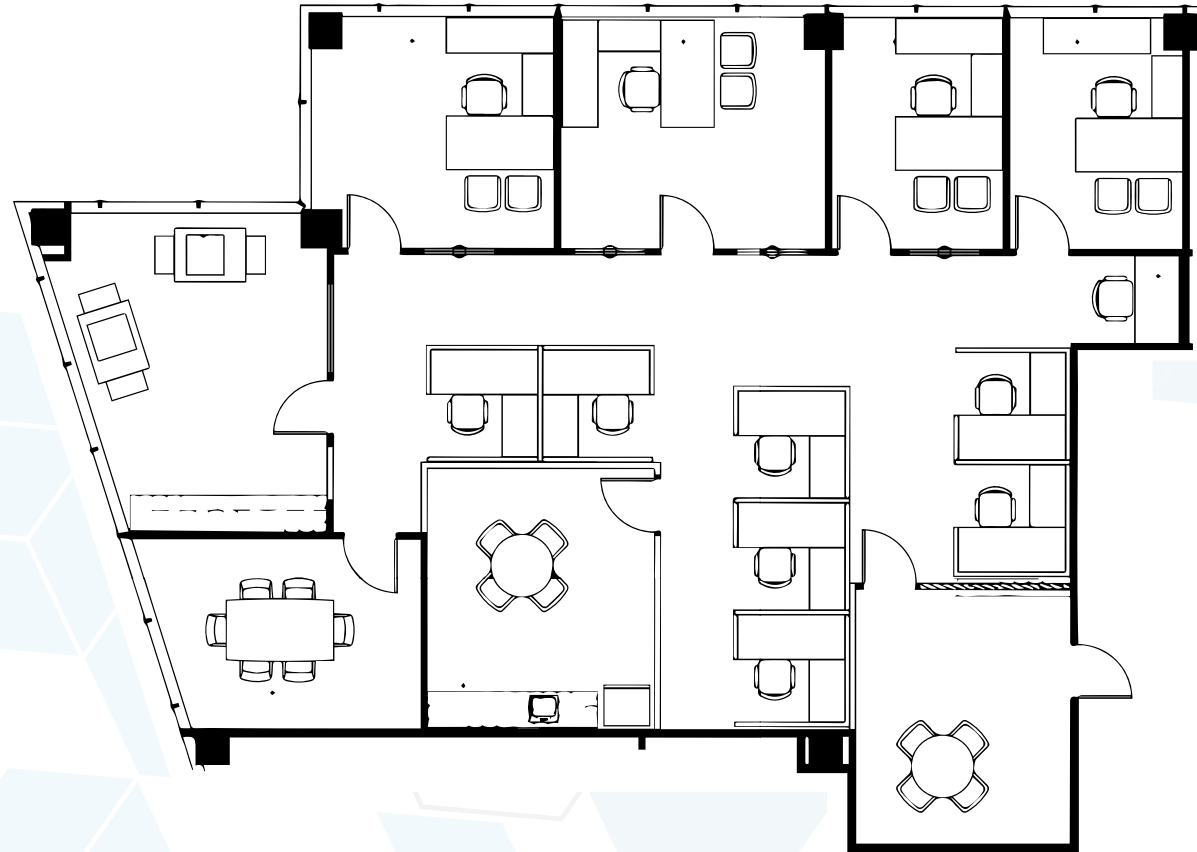
5 Window Offices

Workroom

Kitchenette

Conference Room

Bullpen Area



**Scott Romick**  
818.933.0305  
sromick@lee-re.com

**Eugene Kim**  
818.444.4919  
ekim@lee-re.com

**Sydney Fraser**  
818.288.4085  
sfraser@lee-re.com

**LEE & ASSOCIATES**  
COMMERCIAL REAL ESTATE SERVICES

# 21900 BURBANK BLVD

CLASS A OFFICE IN WARNER CENTER | FOR LEASE

## SUITE 200\*

±6,808 RSF

\*SUITES 200, 215, 265 CONTIGUOUS FOR 11,616 RSF

Reception Area

11 Window Offices

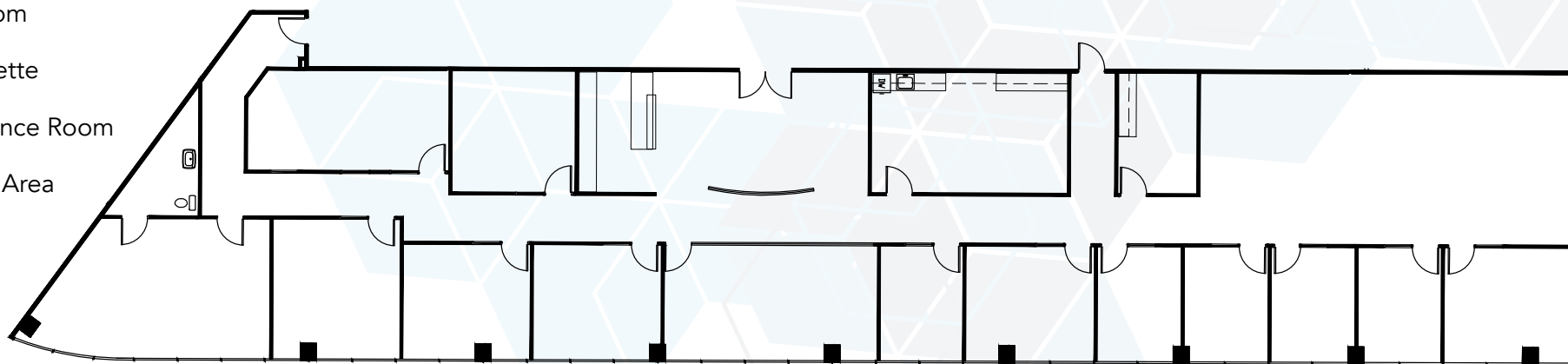
2 Interior Offices

Workroom

Kitchenette

Conference Room

Bullpen Area



**Scott Romick**  
818.933.0305  
sromick@lee-re.com

**Eugene Kim**  
818.444.4919  
ekim@lee-re.com

**Sydney Fraser**  
818.288.4085  
sfraser@lee-re.com

**LEE & ASSOCIATES**  
COMMERCIAL REAL ESTATE SERVICES

# 21900 BURBANK BLVD

CLASS A OFFICE IN WARNER CENTER | FOR LEASE

## SUITE 207

±1,288 RSF

2 Window Offices

Conference Room

1 Interior Office

2 Built-In Cubicle Spaces



**Scott Romick**  
818.933.0305  
sromick@lee-re.com

**Eugene Kim**  
818.444.4919  
ekim@lee-re.com

**Sydney Fraser**  
818.288.4085  
sfraser@lee-re.com

**LEE & ASSOCIATES**  
COMMERCIAL REAL ESTATE SERVICES

# 21900 BURBANK BLVD

CLASS A OFFICE IN WARNER CENTER | FOR LEASE

## SUITE 215\*

±2,231 RSF

\*SUITES 200, 215, 265 CONTIGUOUS FOR 11,616 RSF

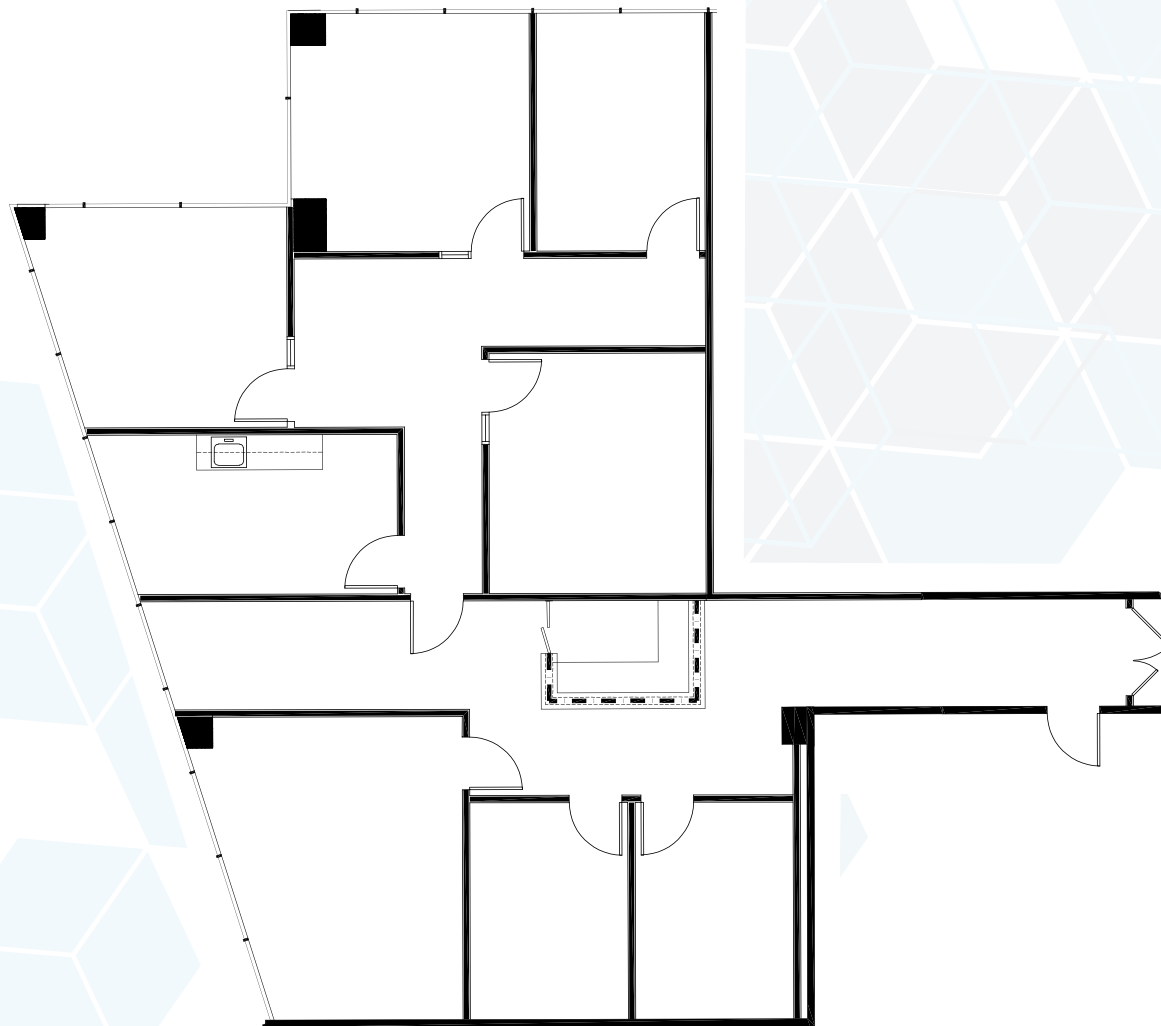
3 Window Offices

3 Interior Offices

Storage Room

Reception Area

Conference Room



**Scott Romick**  
818.933.0305  
sromick@lee-re.com

**Eugene Kim**  
818.444.4919  
ekim@lee-re.com

**Sydney Fraser**  
818.288.4085  
sfraser@lee-re.com

**LEE & ASSOCIATES**  
COMMERCIAL REAL ESTATE SERVICES

# 21900 BURBANK BLVD

CLASS A OFFICE IN WARNER CENTER | FOR LEASE

## SUITE 265\*

±2,577 RSF

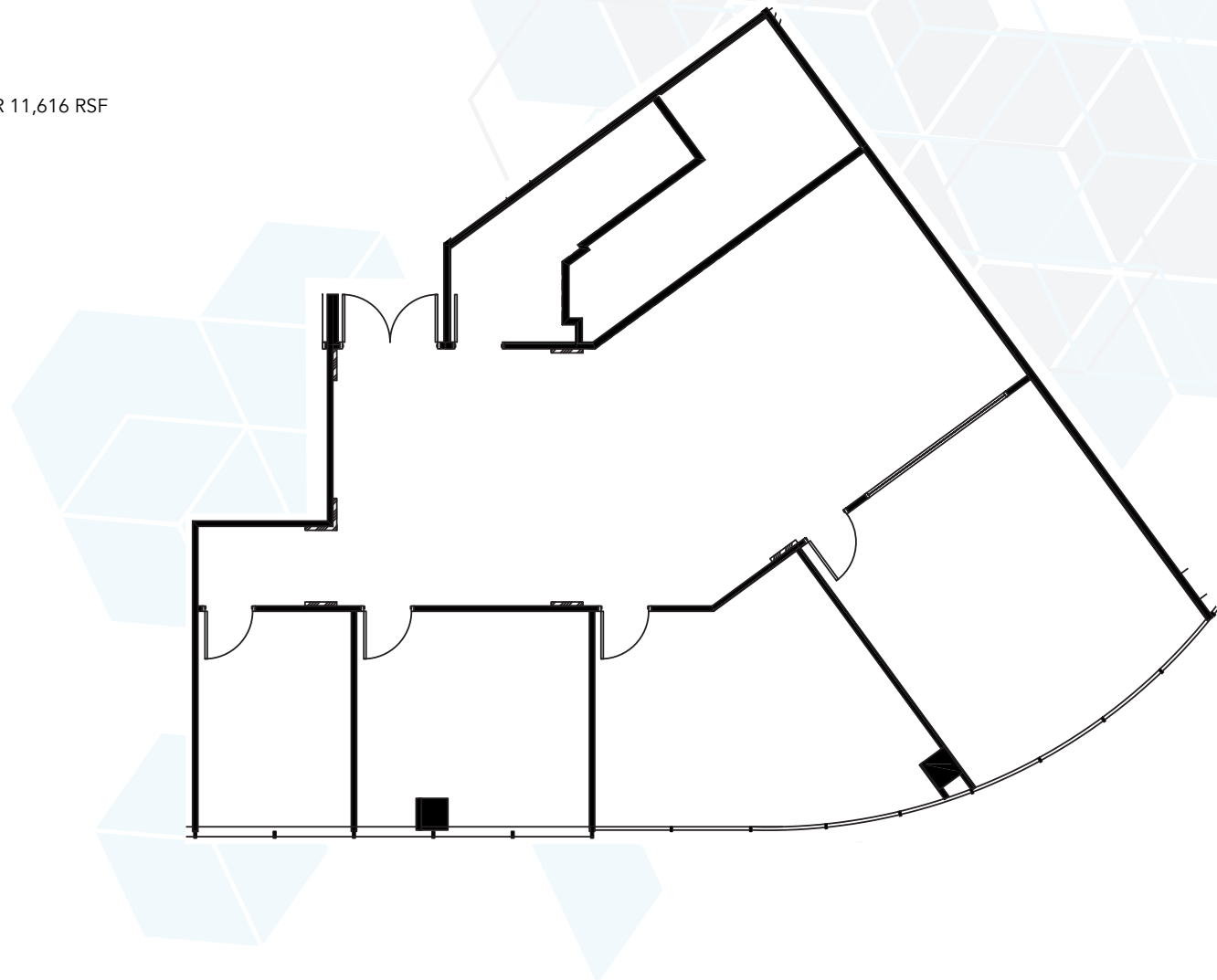
\*SUITES 200, 215, 265 CONTIGUOUS FOR 11,616 RSF

Reception Area

Conference Room

3 Window Offices

Small Storage Area



**Scott Romick**  
818.933.0305  
sromick@lee-re.com

**Eugene Kim**  
818.444.4919  
ekim@lee-re.com

**Sydney Fraser**  
818.288.4085  
sfraser@lee-re.com

**LEE & ASSOCIATES**  
COMMERCIAL REAL ESTATE SERVICES



# 21900 BURBANK BLVD

CLASS A OFFICE IN WARNER CENTER | FOR LEASE

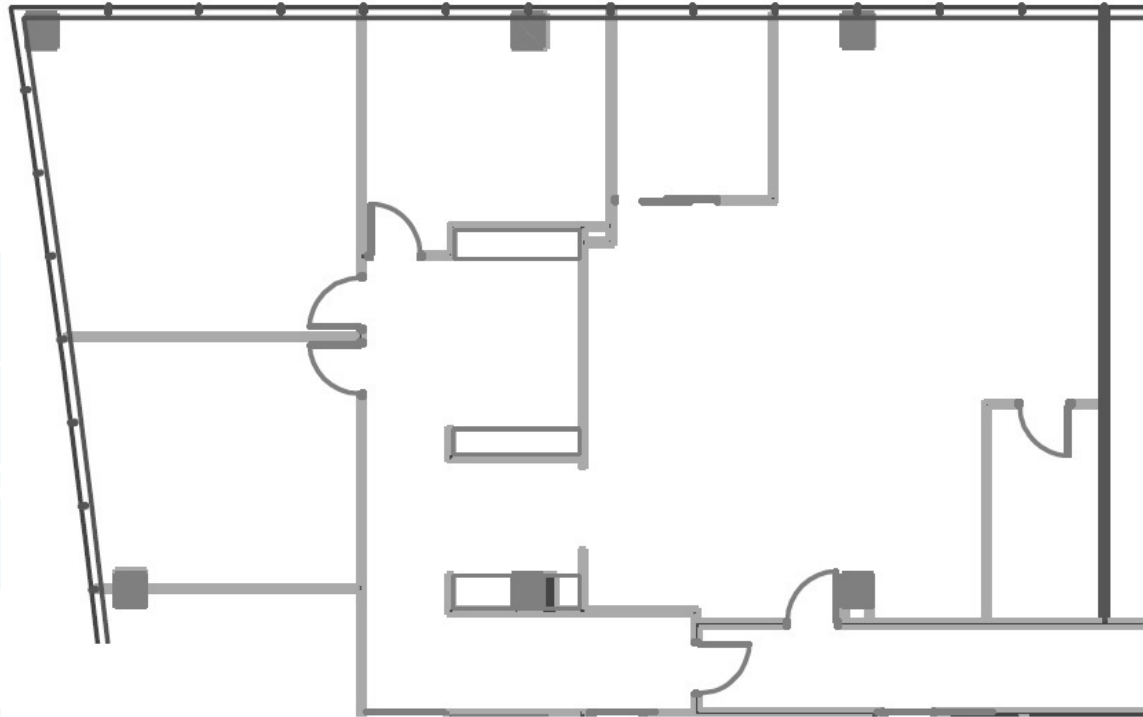
## SUITE 275\*

±3,260 RSF

\*SUITES 275 & 280 CONTIGUOUS FOR 4,681 RSF

4 Window Offices

Bullpen



**Scott Romick**  
818.933.0305  
sromick@lee-re.com

**Eugene Kim**  
818.444.4919  
ekim@lee-re.com

**Sydney Fraser**  
818.288.4085  
sfraser@lee-re.com

**LEE & ASSOCIATES**  
COMMERCIAL REAL ESTATE SERVICES



# 21900 BURBANK BLVD

CLASS A OFFICE IN WARNER CENTER | FOR LEASE

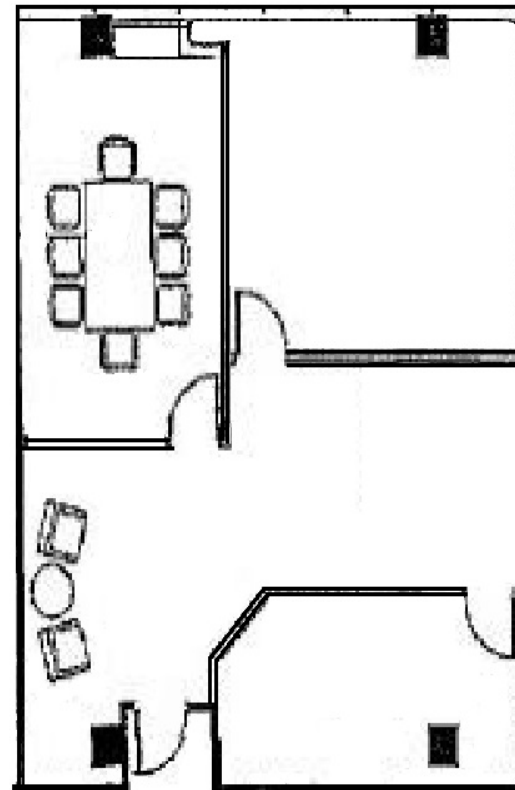
## SUITE 280\*

±1,421 RSF

\*SUITES 275 & 280 CONTIGUOUS FOR 4,681 RSF

2 Window Offices

1 Interior Office



**Scott Romick**  
818.933.0305  
sromick@lee-re.com

**Eugene Kim**  
818.444.4919  
ekim@lee-re.com

**Sydney Fraser**  
818.288.4085  
sfraser@lee-re.com

**LEE & ASSOCIATES**  
COMMERCIAL REAL ESTATE SERVICES

# 21900 BURBANK BLVD

CLASS A OFFICE IN WARNER CENTER | FOR LEASE





# 21900 BURBANK BLVD

CLASS A OFFICE IN WARNER CENTER | FOR LEASE



Scott Romick  
818.933.0305  
sromick@lee-re.com

Eugene Kim  
818.444.4919  
ekim@lee-re.com

Sydney Fraser  
818.288.4085  
sfraser@lee-re.com

**LEE & ASSOCIATES**  
COMMERCIAL REAL ESTATE SERVICES

No warranty or representation is made to the accuracy of the foregoing information. Terms of sale or lease and availability are subject to change or withdrawal without notice. CID #01191898