

OFFICE SUBLEASE

22144 Clarendon St, Woodland Hills



INCREDIBLE LEASE RATE - \$1.25 PSF!

FEATURES

- Beautiful Move-In Ready Space
- Class A Office Building With Outside Patios
- On-Site EV Charging Stations
- Walking Distance to Restaurants & Retailers

PARKING

Covered \$55.00 per month

AVAILABLE

Suite	Size	Rate PSF/FSG
304A	1,020 RSF	\$1,275 (\$1.25/SF) Full Service Sublease Expiration: 10/14/23
304B	2,869 RSF	\$3,586 (\$1.25/SF) Full Service Sublease Expiration: 08/31/23

*Contiguous: 3,889 RSF



For more information please contact:

Eugene Kim
818.444.4919
ekim@lee-re.com
DRE# 01425638

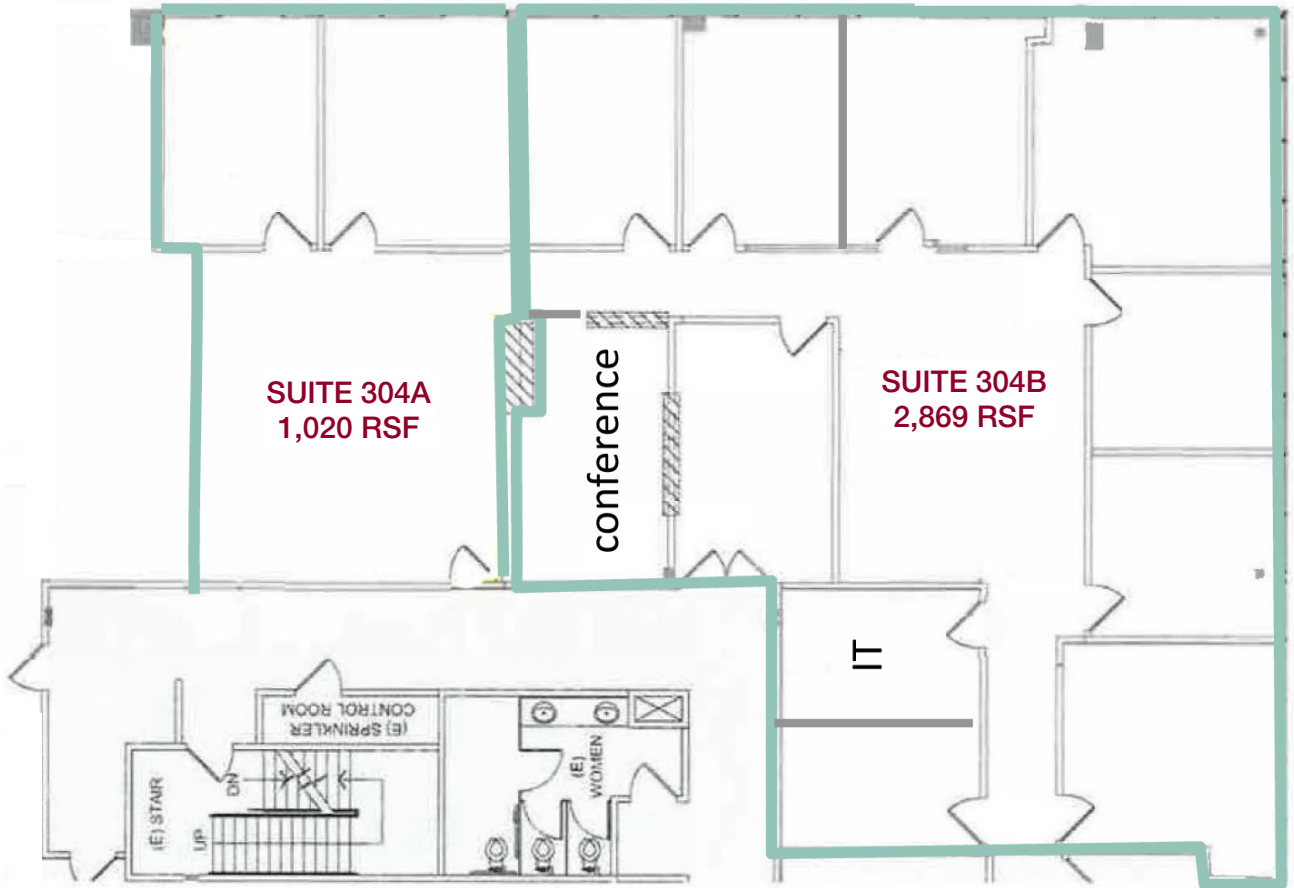
Scott Romick
818.933.0305
sromick@lee-re.com
DRE# 01323527



Lee & Associates® - LA North/Ventura, Inc. • Corporate ID #01191898
A Member of the Lee & Associates® Group of Companies
15250 Ventura Blvd., Suite 100 • Sherman Oaks, CA 91403
P:818.986.9800 F:818.933.0405 • www.lee-associates.com

No warranty or representation is made to the accuracy of the foregoing information. Terms of sale or lease and availability are subject to change or withdrawal without notice.

Clarendon Crest OFFICE SUITES FOR SUBLEASE 22144 Clarendon St, Woodland Hills



NOT TO SCALE



For more information please contact:

Eugene Kim
818.444.4919
ekim@lee-re.com
DRE# 01425638

Scott Romick
818.933.0305
sromick@lee-re.com
DRE# 01323527

 **LEE &
ASSOCIATES**
COMMERCIAL REAL ESTATE SERVICES

Lee & Associates® - LA NorthVentura, Inc. • Corporate ID #01191898
A Member of the Lee & Associates® Group of Companies
15250 Ventura Blvd., Suite 100 • Sherman Oaks, CA 91403
P:818.986.9800 F:818.933.0405 • www.lee-associates.com

No warranty or representation is made to the accuracy of the foregoing information. Terms of sale or lease and availability are subject to change or withdrawal without notice.