

TOPAZ BUSINESS PARK

2280 Ward Avenue, Suite 210, Simi Valley, California

OFFICE FOR LEASE

3,771 SF



BRETT SAUNDERS
Principal
818.581.7061
bsaunders@lee-re.com
License ID # 01991011

MICHAEL TINGUS
President
818.223.4380
mtingus@lee-re.com
www.miketingus.com
License ID # 01013724



Lee & Associates®-LA North/Ventura, Inc.
Corporate ID #01191898
A Member of the Lee & Associates Group of Companies
5707 Corsa Ave, Suite 200, Westlake Village, CA 91362
P: 818-223-4388 F: 818-591-1450 • www.lee-associates.com

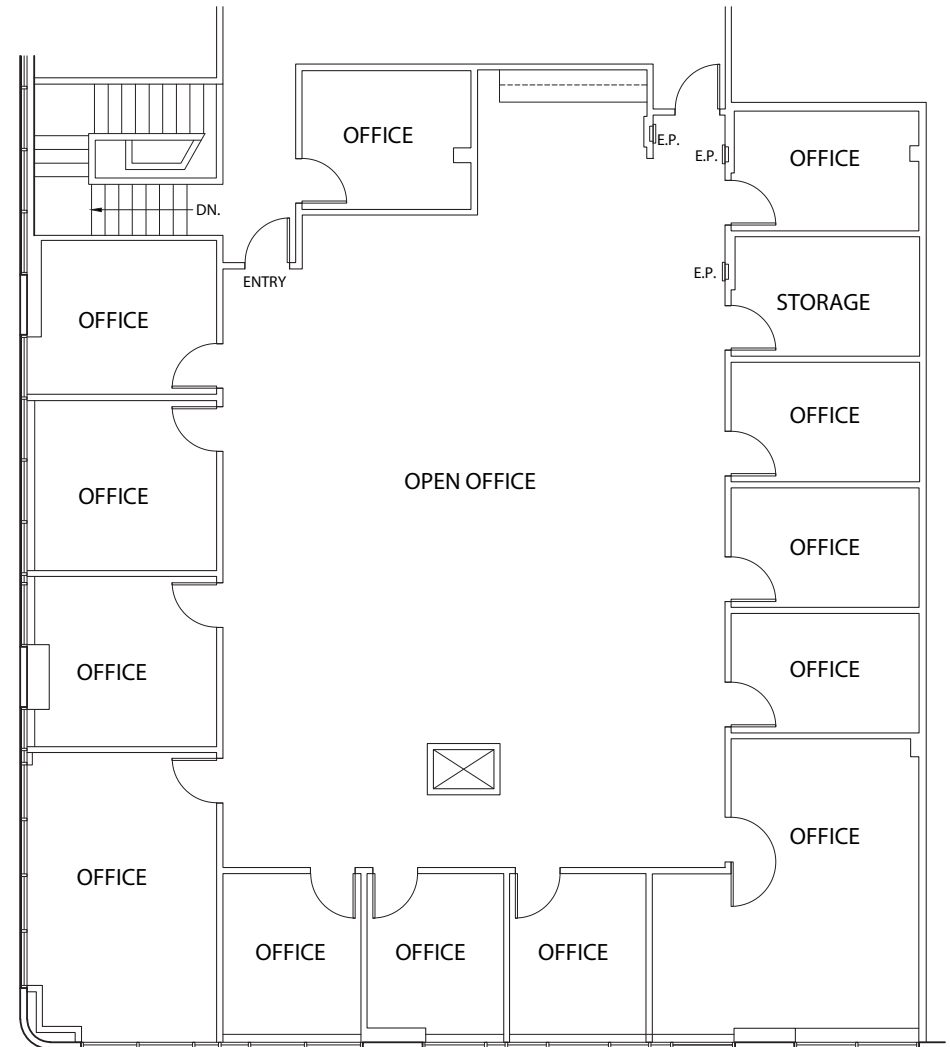
No warranty or representation is made to the accuracy of the foregoing information. Terms of sale or lease and availability are subject to change or withdrawal without notice.

PROPERTY HIGHLIGHTS

- EXTENSIVE WINDOWLINE
- UPGRADED COMMON AREAS
- IDEALLY SITUATED BETWEEN CONEJO AND SAN FERNANDO VALLEY
- TURN-KEY

AVAILABILITY

- SIZE : 3,771 SF
- LEASE RATE : \$1.15 PSF
- LEASE TYPE : MODIFIED GROSS
- CAM : \$0.20



BRETT SAUNDERS
Principal
818.581.7061
bsaunders@lee-re.com
License ID # 01991011

MICHAEL TINGUS
President
818.223.4380
mtingus@lee-re.com
www.miketingus.com
License ID # 01013724



TOPAZ BUSINESS PARK

2280 Ward Avenue, Suite A, Simi Valley, California

AMENITIES AERIAL

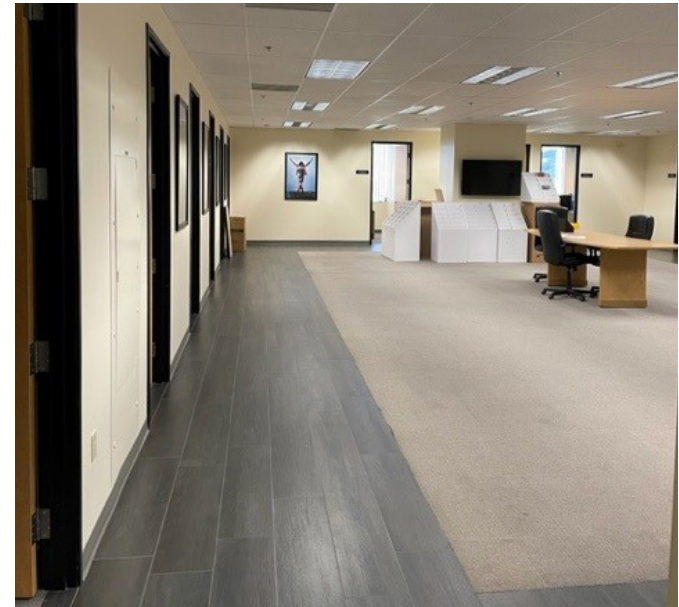
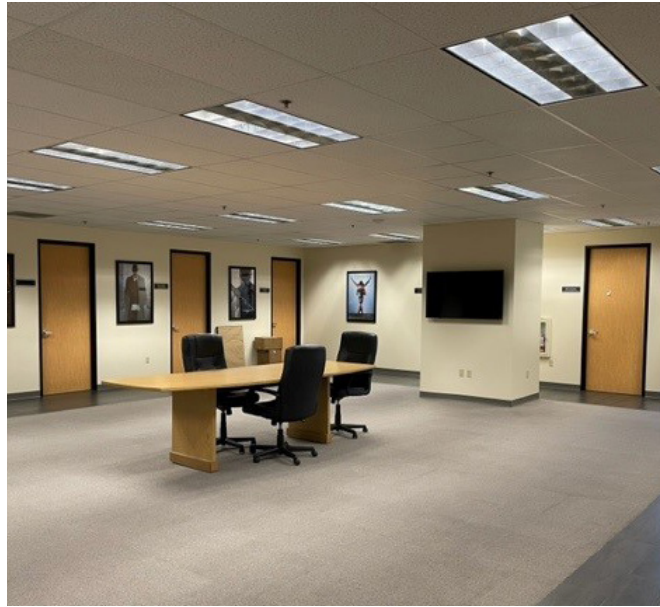


No warranty or representation is made to the accuracy of the foregoing information. Terms of sale or lease and availability are subject to change or withdrawal without notice.

TOPAZ BUSINESS PARK

2280 Ward Avenue, Suite A, Simi Valley, California

PROPERTY PHOTOS



No warranty or representation is made to the accuracy of the foregoing information. Terms of sale or lease and availability are subject to change or withdrawal without notice.

TOPAZ BUSINESS PARK

2280 Ward Avenue, Suite A, Simi Valley, California

OFFICE FOR LEASE

3,771 SF

BRETT SAUNDERS
PRINCIPAL
818.581.7061
bsaunders@lee-re.com
License ID # 01991011

MICHAEL TINGUS
PRESIDENT
818.223.4380
mtingus@lee-re.com
www.miketingus.com
License ID # 01013724

ABOUT LEE & ASSOCIATES

Lee & Associates offers an array of real estate services tailored to meet the needs of the company's clients, including commercial real estate brokerage, integrated services, and construction services. Established in 1979, Lee & Associates is now an international firm with 70+ offices throughout the United States and Canada. Our 1,300 professionals regularly collaborate to make sure they are providing their clients with the most advanced, up-to-date market technology and information. For the latest news from Lee & Associates, visit lee-associates.com or follow us on Facebook, LinkedIn, Twitter, and Link, our company blog.



COMMERCIAL REAL ESTATE SERVICES

Lee & Associates®-LA North/Ventura, Inc.

Corporate ID #01191898

A Member of the Lee & Associates Group of Companies

5707 Corsa Ave, Suite 200, Westlake Village, CA 91362

P: 818-223-4388 F: 818-591-1450 • www.lee-associates.com

No warranty or representation is made to the accuracy of the foregoing information. Terms of sale or lease and availability are subject to change or withdrawal without notice.