



3375 COCHRAN

SIMI VALLEY | CALIFORNIA

SIMI VALLEY OFFICE PARK FOR SUBLEASE

BRETT SAUNDERS

Principal
818.581.7061
bsaunders@lee-re.com
DRE 01991011

DREW STEWART

Associate
805.390.4455
dstewart@lee-re.com
DRE 01859831





1987

YEAR BUILT

5,638 SF

BUILDING SIZE

\$1.85 MG

LEASE RATE

06/30/27

SUBLEASE THROUGH

4/1,000

PARKING

CO

ZONING



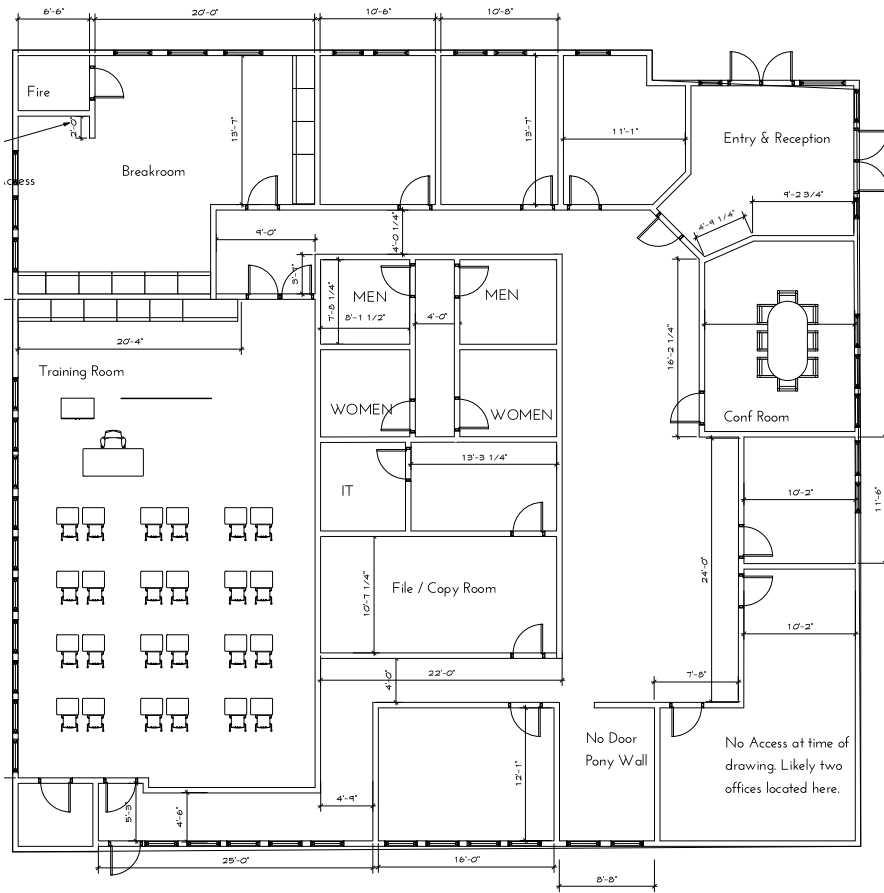
PROPERTY HIGHLIGHTS

- Free Standing Single Tenant Office Building
- New Ownership
- Extensive Window Line
- Abundant Parking
- Close Proximity to Numerous Retail and Restaurant Amenities
- Immediate Access to 118 Freeway

SIMI VALLEY OFFICE PARK

3375 Cochran St | Simi Valley, CA

PHOTOS & FLOOR PLAN

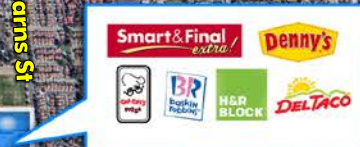




Simi Hills Golf Course

SUBJECT
3375 Cochran St
Simi Valley, CA

Alamo St
RONALD REAGAN FWY (US 118)



118

118

Simi Valley

Sycamore Dr

E Los Angeles Ave

Tapo Canyon Rd

Cochran St

Tapo St

Stearns St

3375 COCHRAN ST
SIMI VALLEY, CA

Sequoia Ave
Cochran St

AMENITIES & AERIALS



CONTACT NOW

BRETT SAUNDERS

Principal

818.581.7061

bsaunders@lee-re.com

DRE 01991011

DREW STEWART

Associate

805.390.4455

dstewart@lee-re.com

DRE 01859831

Simi Valley
Office Park
3325 3355 3375