

4111 LANKERSHIM BLVD

STUDIO CITY/ NOHO/ TOLUCA LAKE

Single Tenant User Building For Lease

- * **9,433 Square Feet**
- * **3 Floors with Balcony**
- * **Building Signage/Identity**
- * **Elevator and Internal Stairs**
- * **Private Bathrooms on Each Floor**
- * **FREE Parking**
- * **Close to Metro, 134 & 101 Freeways**

Rent: \$2.70 MG
Parking: Free



Scott Romick
Principal/Managing Director
sromick@lee-re.com
Lic.# 01323527
818-933-0305

David Kaufman
Associate
dkaufman@lee-re.com
Lic.# 02109841
818-933-0311

4111 LANKERSHIM BLVD

STUDIO CITY/ NOHO/ TOLUCA LAKE

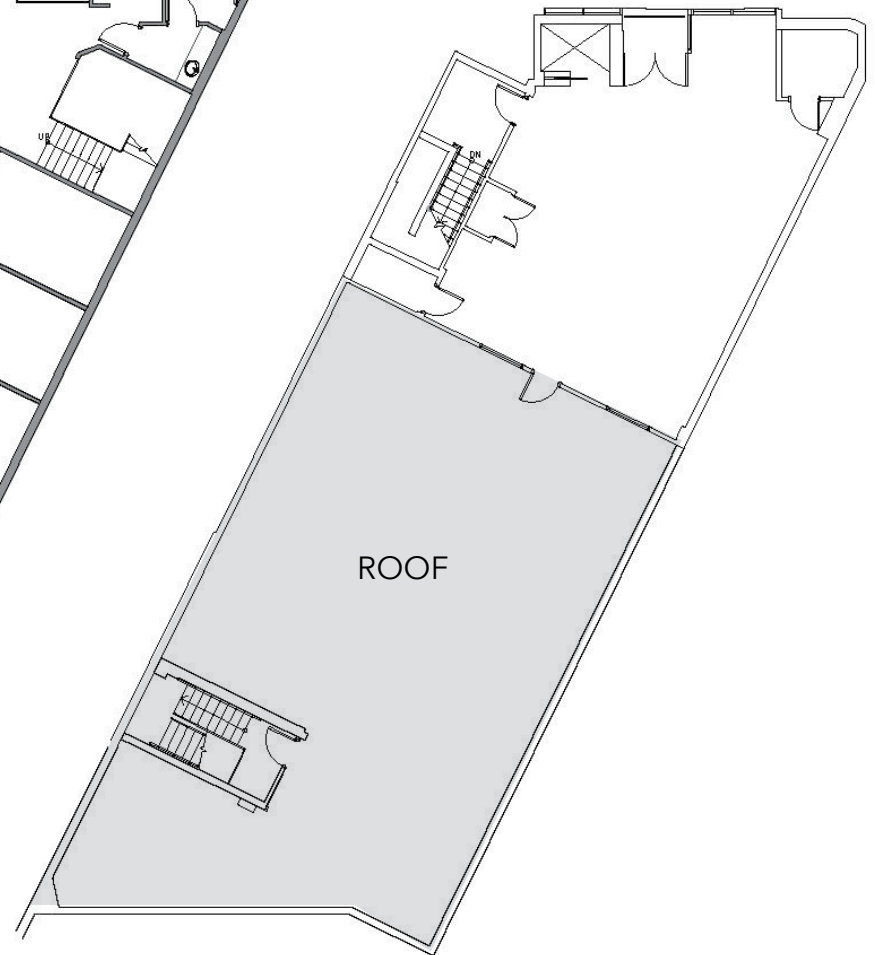
1st FLOOR



2nd FLOOR



3rd FLOOR



4111 LANKERSHIM BLVD

STUDIO CITY/ NOHO/ TOLUCA LAKE



Scott Romick
Principal/Managing Director
sromick@lee-re.com
Lic.# 01323527
818-933-0305

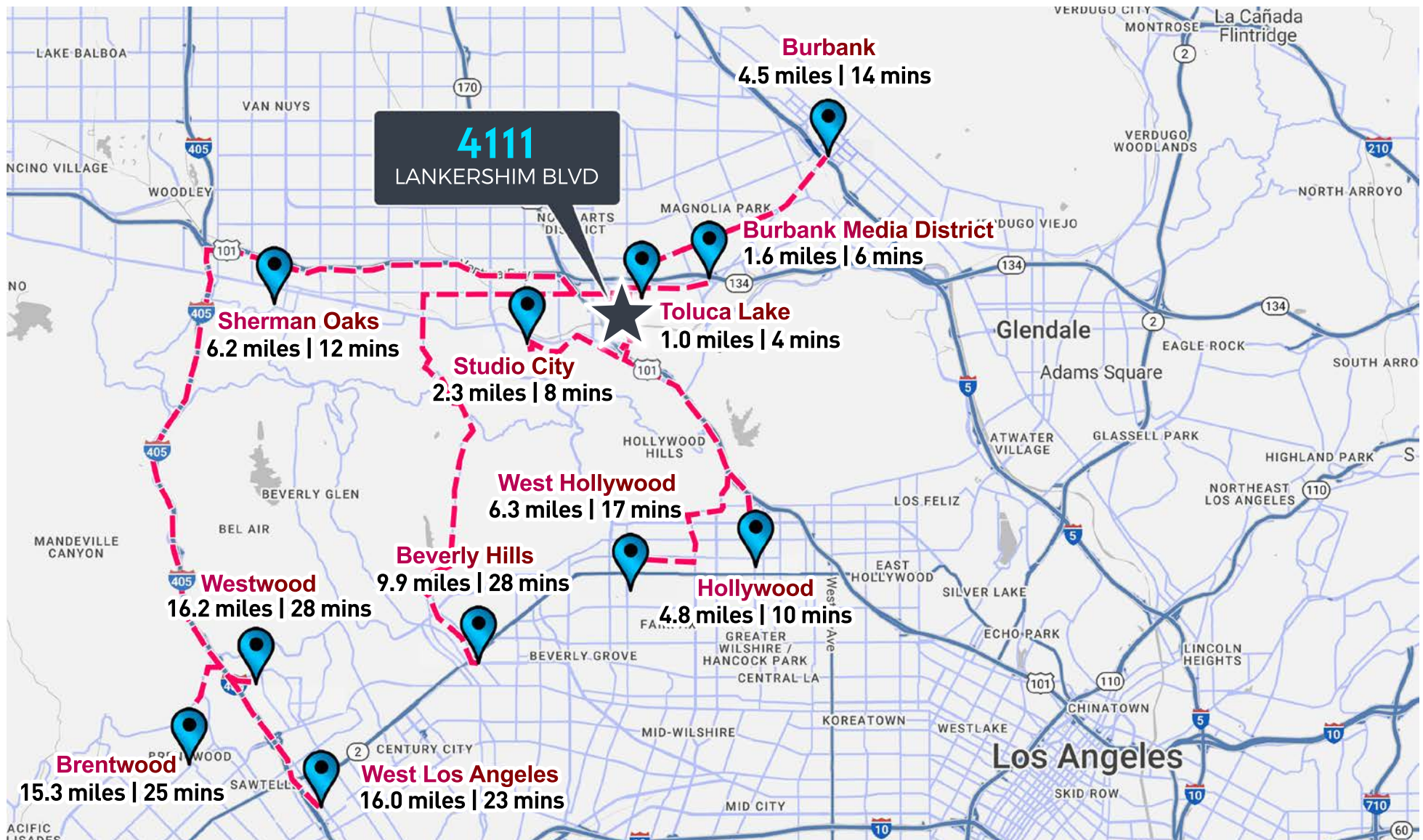
David Kaufman
Associate
dkaufman@lee-re.com
Lic.# 02109841
818-933-0311



No warranty or representation is made to the accuracy of the foregoing information. Terms of sale or lease and availability are subject to change or withdrawal without notice.

4111 LANKERSHIM BLVD

STUDIO CITY/ NOHO/ TOLUCA LAKE



Scott Romick
Principal/Managing Director
sromick@lee-re.com
Lic.# 01323527
818-933-0305

David Kaufman
Associate
dkaufman@lee-re.com
Lic.# 02109841
818-933-0311



4111 LANKERSHIM BLVD



Scott Romick
Principal/Managing Director
sromick@lee-re.com
Lic.# 01323527
818-933-0305

David Kaufman
Associate
dkaufman@lee-re.com
Lic.# 02109841
818-933-0311



LEE & ASSOCIATES
COMMERCIAL REAL ESTATE SERVICES

No warranty or representation is made to the accuracy of the foregoing information. Terms of sale or lease and availability are subject to change or withdrawal without notice.