

4312 Woodman Avenue

Sherman Oaks



• For more information:



LEE & ASSOCIATES
COMMERCIAL REAL ESTATE SERVICES

Lee & Associates · LA North/Ventura, Inc.

Corporate ID #01191898

A Member of the Lee & Associates Group of Companies

15250 Ventura Blvd, Suite 100, Sherman Oaks, CA 91403

P:818.986.9800 F:818.933.0405

No warranty or representation is made to the accuracy of the foregoing information.
Terms of sale or lease and availability are subject to change or withdrawal without notice.

SCOTT ROMICK

Principal

818.933.0305

sromick@lee-re.com

BRE #01323527

DARREN CASAMASSIMA

Principal

818.933.0303

dc@lee-re.com

BRE #01425638

Office Space For Lease | 4312 Woodman Avenue | Sherman Oaks

PROPERTY DETAILS

| | |
|---------------------|--|
| ADDRESS | 4312 Woodman Avenue Sherman Oaks, CA 91423 |
| PARKING | \$95 per car, per month Covered subterranean |
| AVAILABILITY | Entire 3rd Floor 16,065 RSF Suite 300 7,437 RSF Suite 301 8,629 RSF Rate: \$2.30 PSF, MG |

PROPERTY HIGHLIGHTS

- FULL FLOOR OPPORTUNITY
- SCHOOL C OF O WITH CLASSROOMS
- FIVE USABLE BALCONIES
- BUILDING TOP SIGNAGE OPTION
- 24-HOUR TENANT CONTROLLED HVAC
- STEPS FROM THE BEST RESTAURANTS AND DRINKING ESTABLISHMENTS IN SHERMAN OAKS



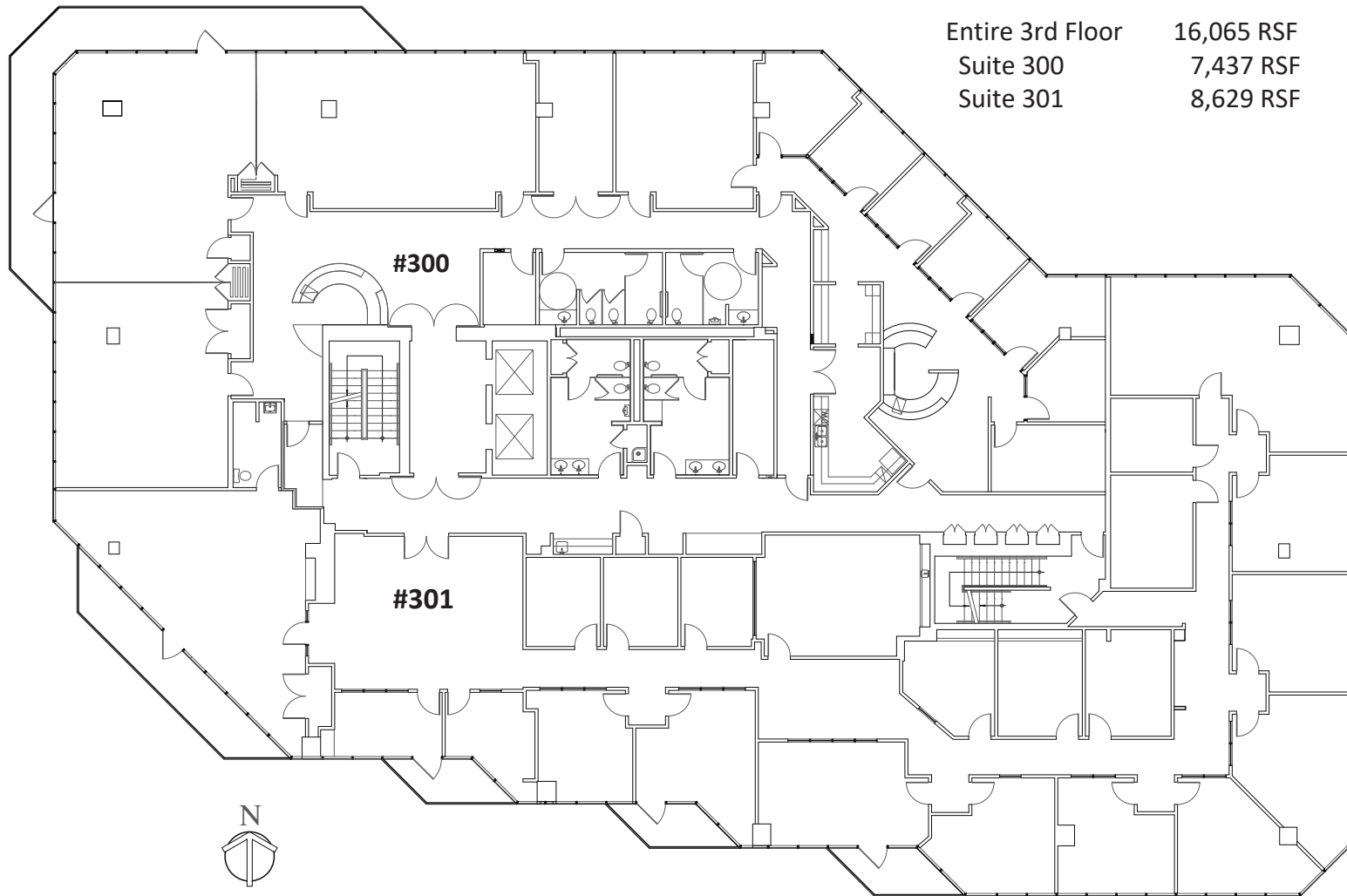
SCOTT ROMICK
818.933.0305
sromick@lee-re.com

DARREN CASAMASSIMA
818.933.0303
dc@lee-re.com



Office Space For Lease | 4312 Woodman Avenue | Sherman Oaks

3RD FLOOR PLAN



| | |
|------------------|------------|
| Entire 3rd Floor | 16,065 RSF |
| Suite 300 | 7,437 RSF |
| Suite 301 | 8,629 RSF |



3RD FLOOR

Food | Shops | Amenities | Transportation

