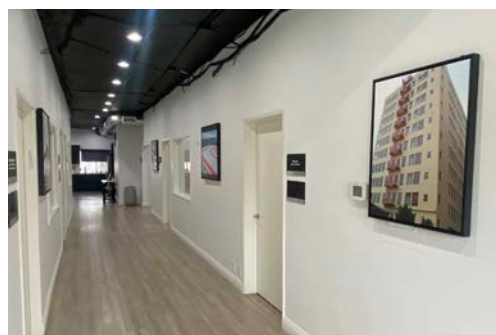
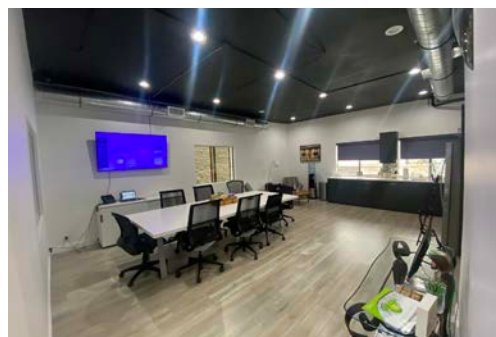


FULL FLOOR OFFICE SUITE FOR LEASE

6930 Owensmouth Avenue, Canoga Park



FEATURES

- Recently Renovated Suites, Hallways and Elevators
- Exposed Open Ceiling, Wood Floors, Operable Windows
- Private Restrooms
- Private Full Floor Occupancy
- 24/7 Tenant Controlled HVAC
- Right Around the Corner from Westfield Topanga & The Village

AVAILABLE

Suite	Size (SF)	Rate	Description
Entire 2nd Floor	2,990	\$1.85/SF MG*	5 Offices, Open Kitchen, Conference Area
Entire 3rd Floor	2,900	\$1.85/SF MG*	5 Offices, Open Kitchen, Conference Room, Reception

**Tenant Pays Utilities and Janitorial*

PARKING

Negotiable

For more information please contact:

Scott Romick
Principal
818.933.0305
sromick@lee-re.com
BRE# 01323527

David Kaufman
Associate
818.933.0311
dkaufman@lee-re.com
BRE# 02109841

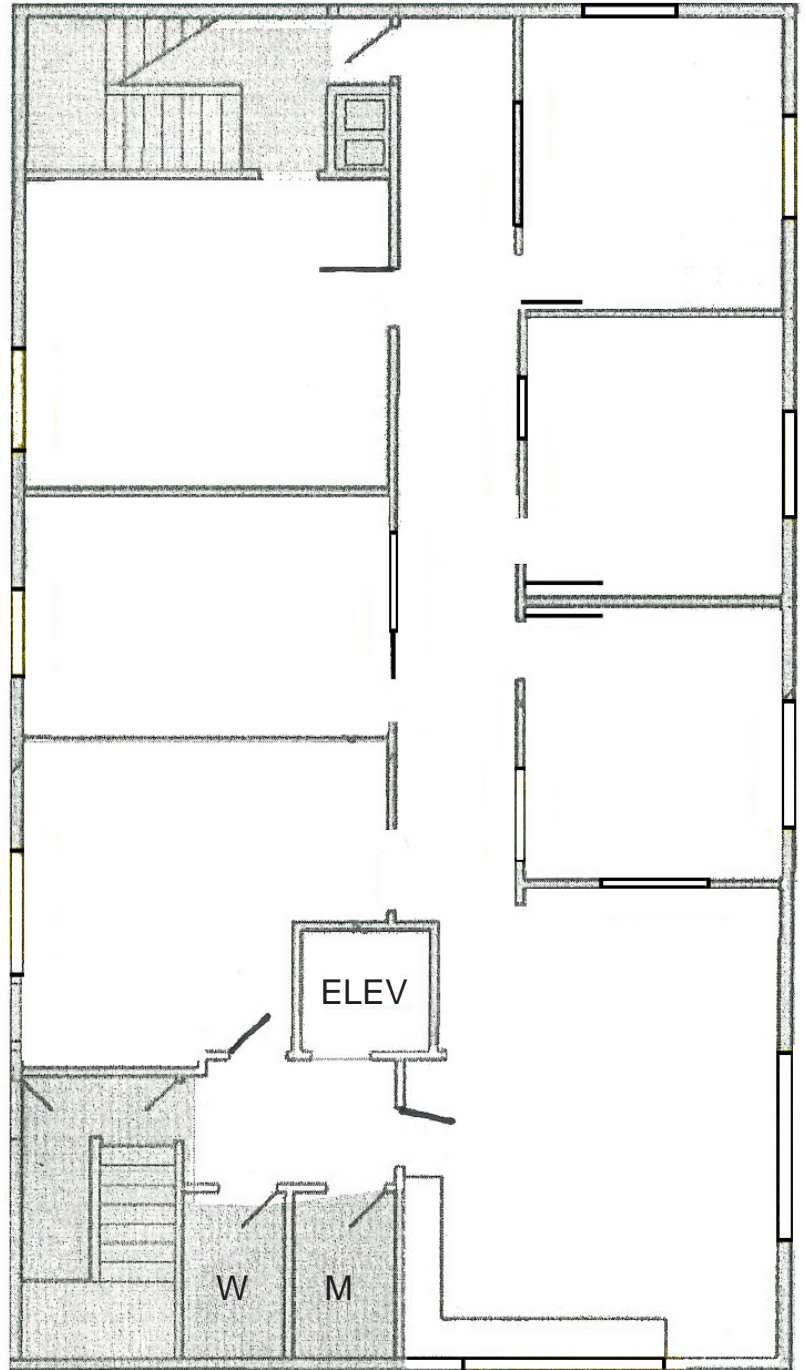


Lee & Associates® - LA North/Ventura, Inc. • Corporate ID #01191898
A Member of the Lee & Associates® Group of Companies
15250 Ventura Blvd., Suite 100 • Sherman Oaks, CA 91403
P:818.986.9800 F:818.933.0405 • www.lee-associates.com

No warranty or representation is made to the accuracy of the foregoing information. Terms of sale or lease and availability are subject to change or withdrawal without notice.

FULL FLOOR OFFICE SUITE FOR LEASE

6930 Owensmouth Avenue, Canoga Park



Entire 2nd Floor
2,990 SF

NOT TO SCALE

For more information please contact:

Scott Romick
Principal
818.933.0305
sromick@lee-re.com
BRE# 01323527

David Kaufman
Associate
818.933.0311
dkaufman@lee-re.com
BRE# 02109841

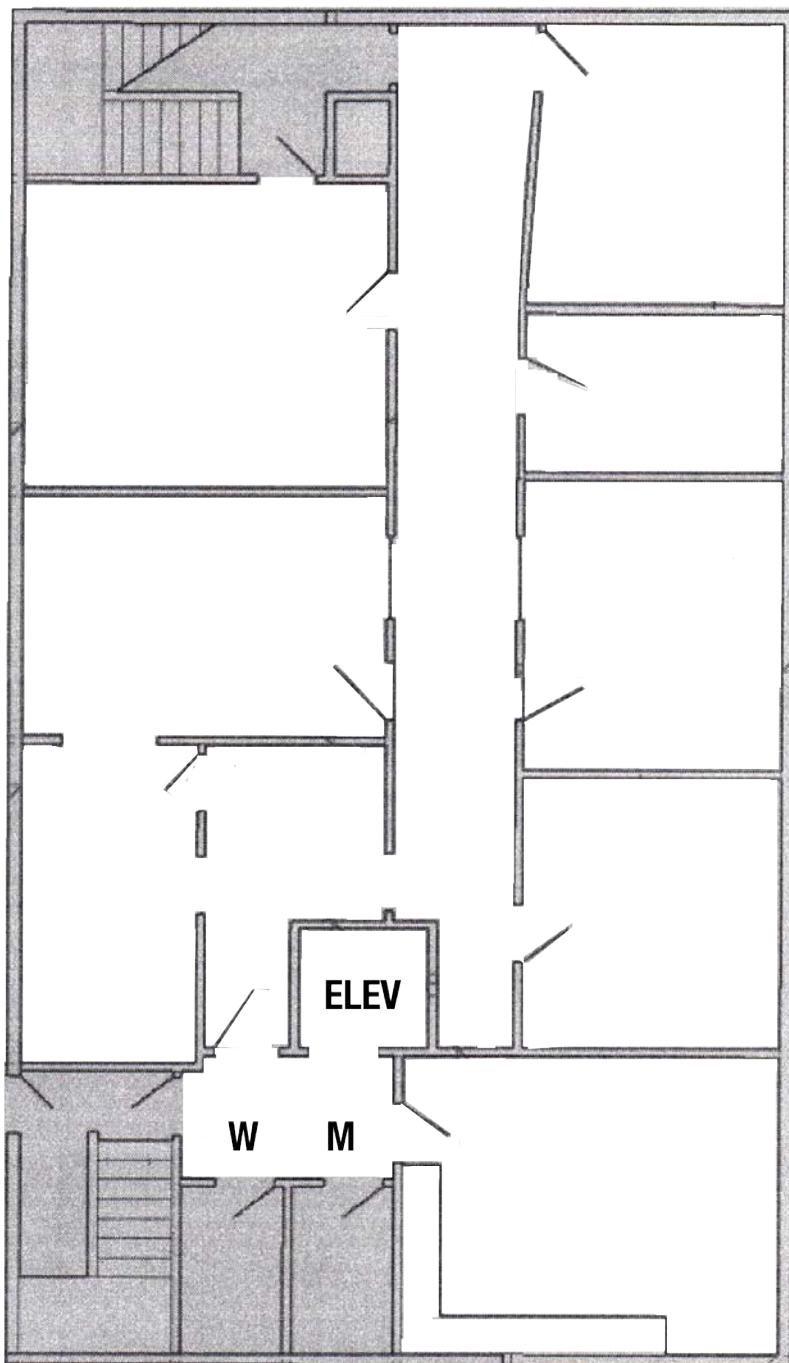


Lee & Associates® - LA North/Ventura, Inc. • Corporate ID #01191898
A Member of the Lee & Associates® Group of Companies
15250 Ventura Blvd., Suite 100 • Sherman Oaks, CA 91403
P:818.986.9800 F:818.933.0405 • www.lee-associates.com

No warranty or representation is made to the accuracy of the foregoing information. Terms of sale or lease and availability are subject to change or withdrawal without notice.

FULL FLOOR OFFICE SUITE FOR LEASE

6930 Owensmouth Avenue, Canoga Park



Entire 3rd Floor
2,990 SF

NOT TO SCALE

For more information please contact:

Scott Romick
Principal
818.933.0305
sromick@lee-re.com
BRE# 01323527

David Kaufman
Associate
818.933.0311
dkaufman@lee-re.com
BRE# 02109841



Lee & Associates® - LA NorthVentura, Inc. • Corporate ID #01191898
A Member of the Lee & Associates® Group of Companies
15250 Ventura Blvd., Suite 100 • Sherman Oaks, CA 91403
P:818.986.9800 F:818.933.0405 • www.lee-associates.com

No warranty or representation is made to the accuracy of the foregoing information. Terms of sale or lease and availability are subject to change or withdrawal without notice.