

**725 E COCHRAN ST, UNIT B**

**INDUSTRIAL SPACE SUBLEASE**

**SIMI VALLEY, CA 93065**



**BRETT SAUNDERS**  
Principal  
818.581.7061  
bsaunders@lee-re.com  
DRE# 01991011

**RYAN PELINO**  
Associate  
818.854.5514  
rpelino@lee-re.com  
DRE# 02223932



**LEE & ASSOCIATES**  
COMMERCIAL REAL ESTATE SERVICES



## PROPERTY DETAILS

Lease expires March 31st, 2026

Zoning:	SP-A-I
Lease Rate:	\$1.40 PSF Gross
Parking:	8 Spaces
Clear Height:	14'
Ground Level Loading:	12' x 12'
Power:	200 Amps

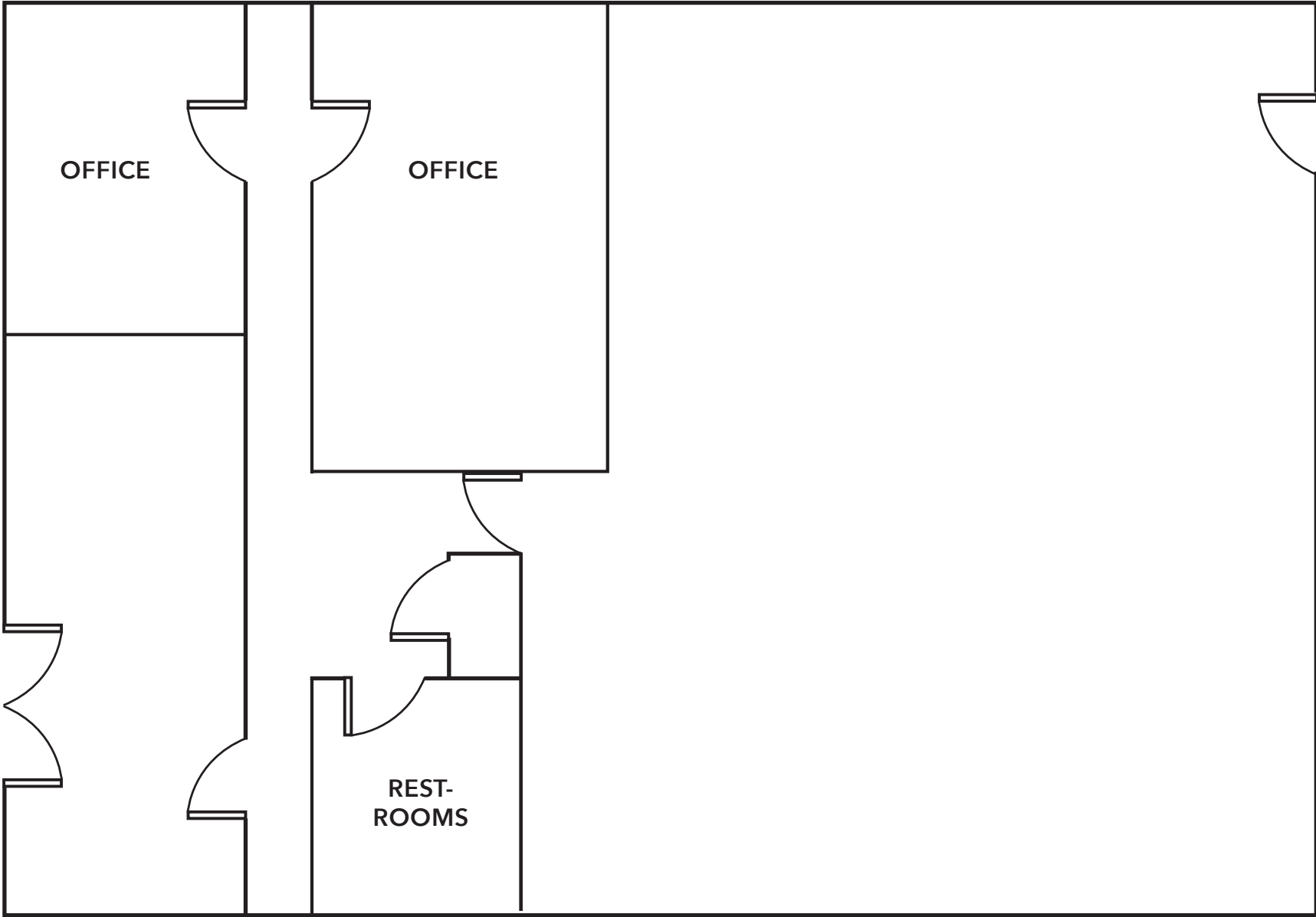
## PROPERTY HIGHLIGHTS

- Easy Access to Hwy 118
- Close proximity to a variety of amenities

### AVAILABILITY

SUITE:	SQ. FT.
UNIT B:	3,312 SF

725 E. COCHRAN ST., UNIT B, SIMI VALLEY, CA



\*Not to scale

# 725 E. COCHRAN ST., UNIT B, SIMI VALLEY, CA



## LEASING INFORMATION

**BRETT SAUNDERS**

Principal

818.581.7061

bsaunders@lee-re.com

DRE# 01991011

**RYAN PELINO**

Associate

818.854.5514

rpelino@lee-re.com

DRE# 02223932



Lee & Associates® - LA North/Ventura, Inc.  
 Corporate ID #01191898  
 A Member of the Lee & Associates®  
 Group of Companies  
 5707 Corsa Ave., Suite 200  
 Westlake Village, CA 91302  
 P:818.223.4388 F:818.591.1450