

OFFICE SUITES FOR LEASE

NORTHRIDGE FINANCIAL PLAZA

9003 Reseda Blvd, Northridge



FEATURES

- Free Parking in Attached Lot
- Landscaped Courtyard
- Building Signage Available
- In-Suite Restrooms

AVAILABLE

Suite	Size	Rate	Type
101	1,506 SF	\$2.45 PSF	Utilities Included
103	1,670 SF	\$2.45 PSF	Utilities Included
205	1,322 SF	\$2.35 PSF	Utilities Included

Tenant pays for janitorial.



For more information please contact:

Scott Romick
Principal
818.933.0305
sromick@lee-re.com
BRE# 01323527

Scott Silverstein
Principal
818.223.4391
ssilverstein@lee-re.com
BRE# 00877034



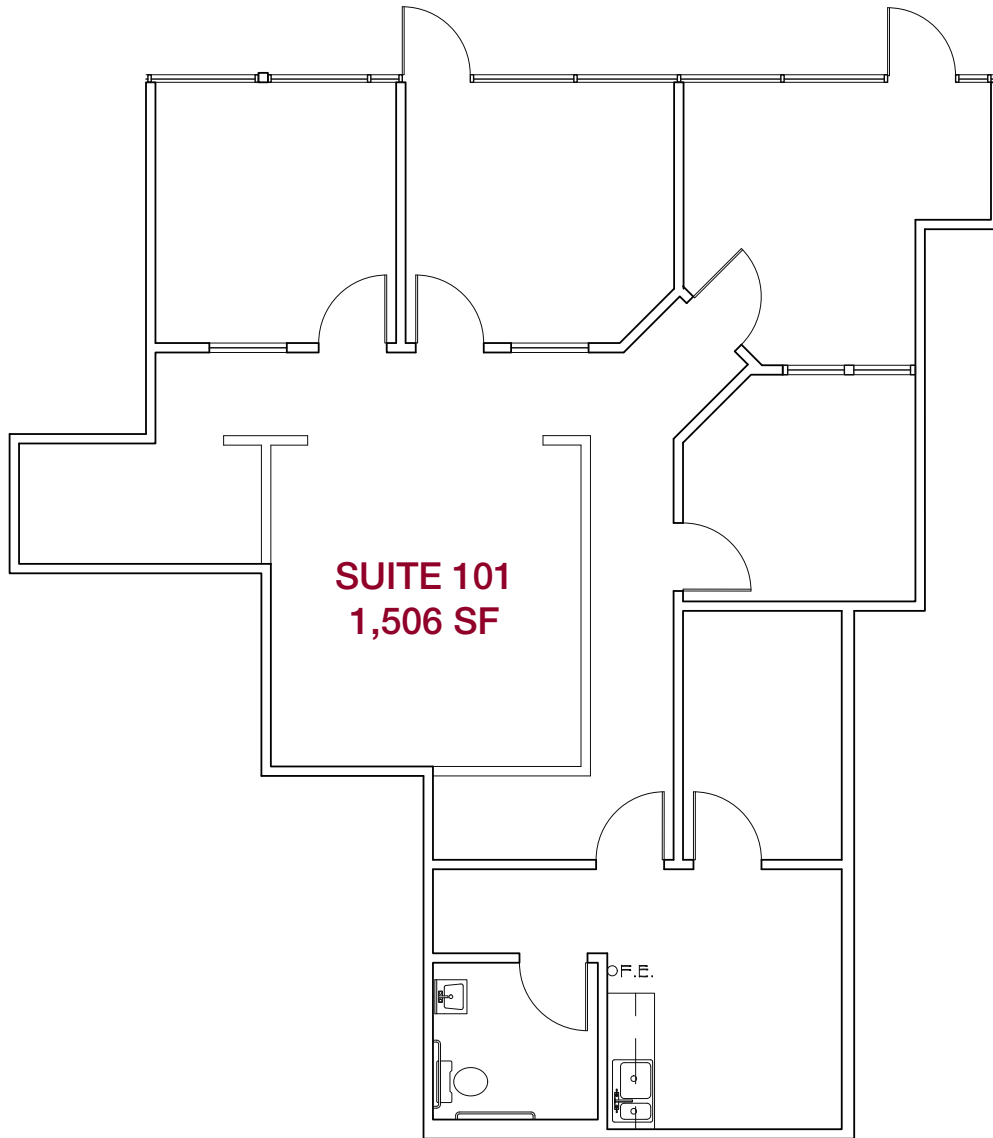
Lee & Associates® - LA NorthVentura, Inc. • Corporate ID #01191898
A Member of the Lee & Associates® Group of Companies
15250 Ventura Blvd., Suite 100 • Sherman Oaks, CA 91403
P:818.966.9800 F:818.933.0405 • www.lee-associates.com

No warranty or representation is made to the accuracy of the foregoing information. Terms of sale or lease and availability are subject to change or withdrawal without notice.

OFFICE SUITES FOR LEASE

NORTHRIDGE FINANCIAL PLAZA

9003 Reseda Blvd, Northridge



For more information please contact:

Scott Romick
Principal
818.933.0305
sromick@lee-re.com
BRE# 01323527

Scott Silverstein
Principal
818.223.4391
ssilverstein@lee-re.com
BRE# 00877034



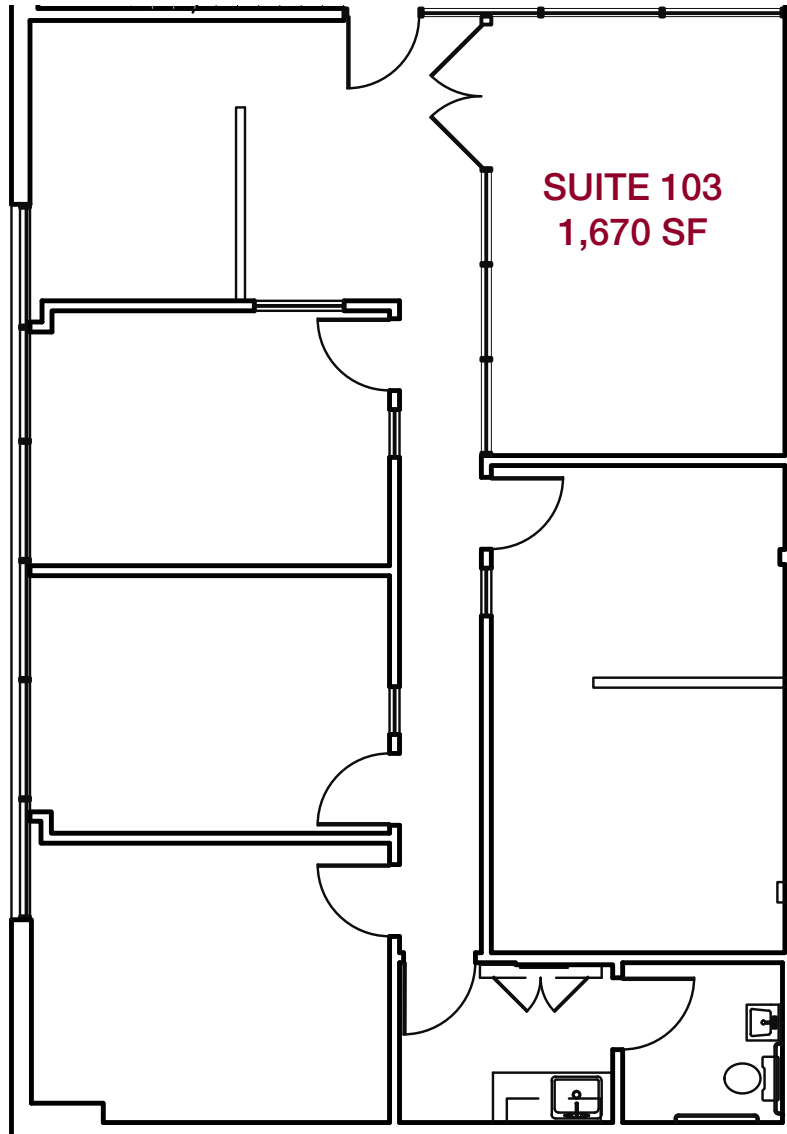
Lee & Associates® - LA NorthVentura, Inc. • Corporate ID #01191898
A Member of the Lee & Associates® Group of Companies
15250 Ventura Blvd., Suite 100 • Sherman Oaks, CA 91403
P:818.966.9800 F:818.933.0405 • www.lee-associates.com

No warranty or representation is made to the accuracy of the foregoing information. Terms of sale or lease and availability are subject to change or withdrawal without notice.

OFFICE SUITES FOR LEASE

NORTHRIDGE FINANCIAL PLAZA

9003 Reseda Blvd, Northridge



For more information please contact:

Scott Romick
Principal
818.933.0305
sromick@lee-re.com
BRE# 01323527

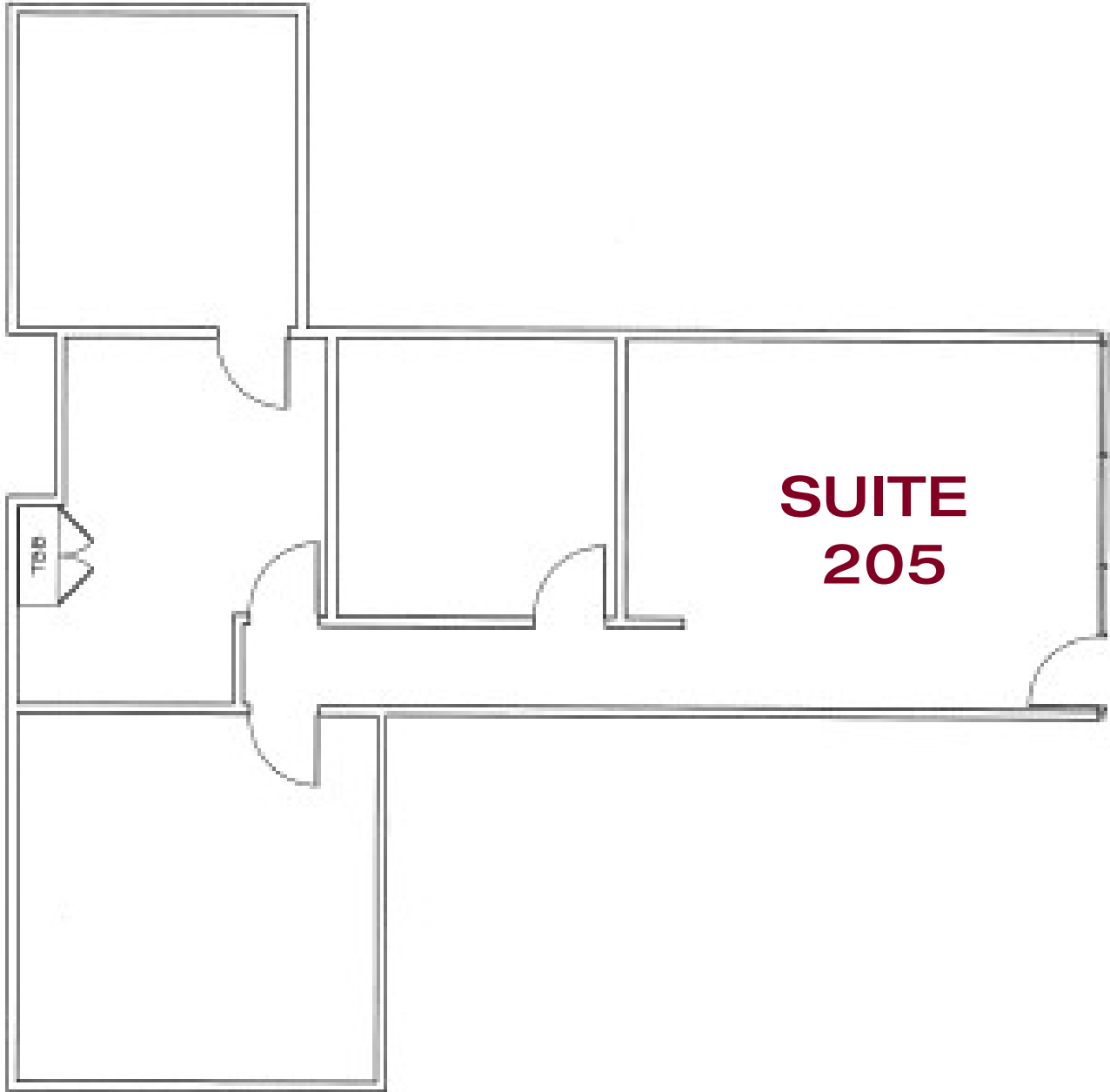
Scott Silverstein
Principal
818.223.4391
ssilverstein@lee-re.com
BRE# 00877034



Lee & Associates® - LA NorthVentura, Inc. • Corporate ID #01191898
A Member of the Lee & Associates® Group of Companies
15250 Ventura Blvd., Suite 100 • Sherman Oaks, CA 91403
P:818.986.9800 F:818.933.0405 • www.lee-associates.com

No warranty or representation is made to the accuracy of the foregoing information. Terms of sale or lease and availability are subject to change or withdrawal without notice.

OFFICE SUITES FOR LEASE
NORTHRIDGE FINANCIAL PLAZA
9003 Reseda Blvd, Northridge



NOT TO SCALE

For more information please contact:

Scott Romick
Principal
818.933.0305
sromick@lee-re.com
BRE# 01323527

Scott Silverstein
Principal
818.223.4391
ssilverstein@lee-re.com
BRE# 00877034



Lee & Associates® - LA NorthVentura, Inc. • Corporate ID #01191898
A Member of the Lee & Associates® Group of Companies
15250 Ventura Blvd., Suite 100 • Sherman Oaks, CA 91403
P:818.966.9800 F:818.933.0405 • www.lee-associates.com

No warranty or representation is made to the accuracy of the foregoing information. Terms of sale or lease and availability are subject to change or withdrawal without notice.

OFFICE SUITES FOR LEASE

NORTHRIDGE FINANCIAL PLAZA

9003 Reseda Blvd, Northridge



For more information please contact:

Scott Romick
Principal
818.933.0305
sromick@lee-re.com
BRE# 01323527

Scott Silverstein
Principal
818.223.4391
ssilverstein@lee-re.com
BRE# 00877034



Lee & Associates® - LA NorthVentura, Inc. • Corporate ID #01191898
A Member of the Lee & Associates® Group of Companies
15250 Ventura Blvd., Suite 100 • Sherman Oaks, CA 91403
P:818.986.9800 F:818.933.0405 • www.lee-associates.com

No warranty or representation is made to the accuracy of the foregoing information. Terms of sale or lease and availability are subject to change or withdrawal without notice.